



General Characteristics of Universal Vents Off-Ridge Vents, VersaVent.

Proper attic ventilation is crucial for maintaining a healthy and energy-efficient home. Installing the Universal Off-Ridge Roof Vents is essential to a well-ventilated attic or parapet wall.

The Universal Off-Ridge Roof Vent facilitates proper airflow and ventilation, allowing air to enter and exit the attic space.

Universal Vents come in various lengths to meet specific ventilation requirements.

By installing Universal Vents, you can ensure a steady Flow of fresh air in the attic, preventing stagnant air and promoting better ventilation.

They are designed to seamlessly integrate with the building's overall architecture, adding a touch of elegance and sophistication to the roof.

They are also available in various colors. These vents can be used for both exhaust and intake ventilation, making them versatile for various attics configurations.

They are engineered to withstand harsh weather conditions, including heavy rain, snow, and strong winds, ensuring long-lasting performance and durable protection.

Product Applications of Universal Vents Off-Ridge Vents, VersaVents.

It adapts to residential and commercial buildings, as well as roofs with flat or steep slopes. A professional can install a Fan in any climate zone and on all types of roofs.

Consult the climate zone chart to determine the appropriate collar height for installation in your area. Homeowners and professionals can install these vents on both new roofs and to replace old roof turbines.

Please refer to the installation instructions provided by AVP to ensure proper installation and maximize ventilation effectiveness. Roof vents require no maintenance.

Warranty of Universal Vents Off-Ridge Vents, VersaVents.

Manufacturer's Warranty: 1-Year



**Active
Ventilation
Products**





VersaVent

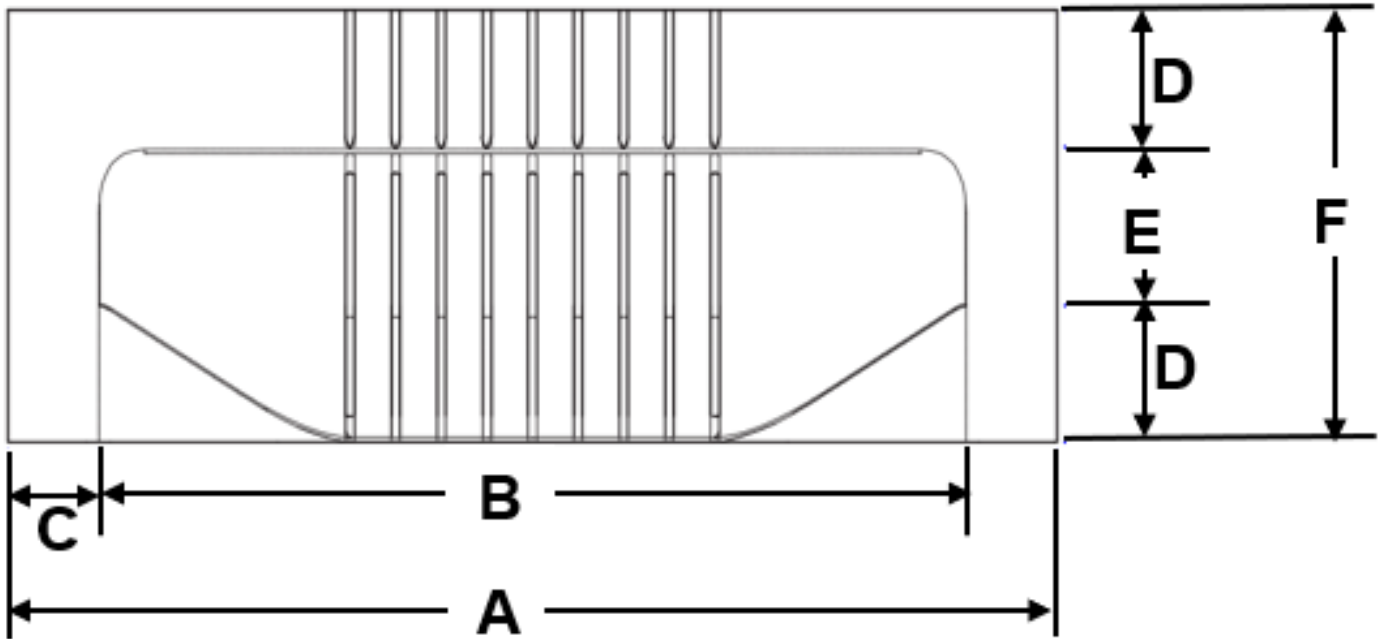
Data Sheet

Specific Characteristics of Universal Vents Off-Ridge Vents, VersaVents.

Item #	Manufacturing #	NFA Net Free Area in Sq. in.	Overall Length	Pitch Capacity		Net Free Vent Area		Application per Sq. Foot		Weight and Dimensions with Packaging	
				Min	Max (Modified)	Inches	feet	(1/150)	(1/300)	Lbs.	L,W,H In
USVSV-001	UV-15	15	23"	3/12	24/12	15	0.10	31	62	3	24,10.5,5
USVSV-002	UV-30	30	31"	3/12	24/12	30	0.21	63	125	4	32,10.5,5
USVSV-003	UV-45	45	39"	3/12	24/12	45	0.31	94	188	5	39,10.5,5
USVSV-004	UV-60	60	47"	3/12	24/12	60	0.42	125	250	6	48,10.5,5
USVSV-005	UV-75	75	55"	3/12	24/12	75	0.52	156	312	7	56,10.5,5
USVSV-006	UV-90	90	63"	3/12	24/12	90	0.63	188	376	8	64,10.5,5

Dimensions (In.) of Universal Vents Off-Ridge Vents, VersaVents.

Series		A	B	C	D	E	F
USVSV-001	UV-15	23"	19"	2"	3"	3.5"	9.5"
USVSV-002	UV-30	31"	27"	2"	3"	3.5"	9.5"
USVSV-003	UV-45	39"	35"	2"	3"	3.5"	9.5"
USVSV-004	UV-60	47"	43"	2"	3"	3.5"	9.5"
USVSV-005	UV-75	55"	51"	2"	3"	3.5"	9.5"
USVSV-006	UV-90	63"	59"	2"	3"	3.5"	9.5"



VentDepot.com

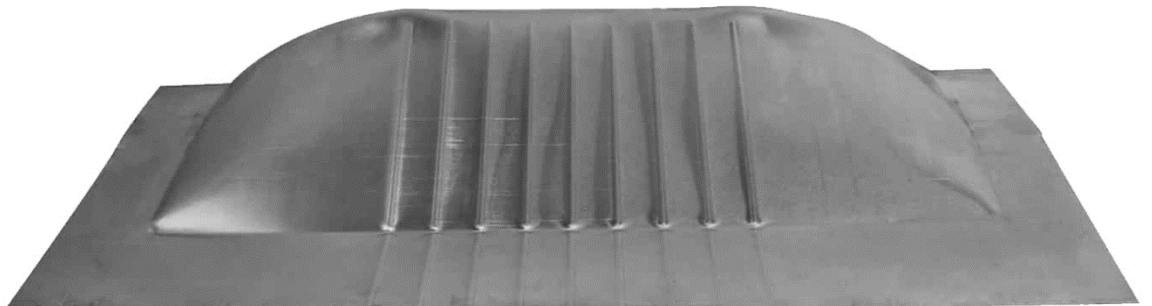
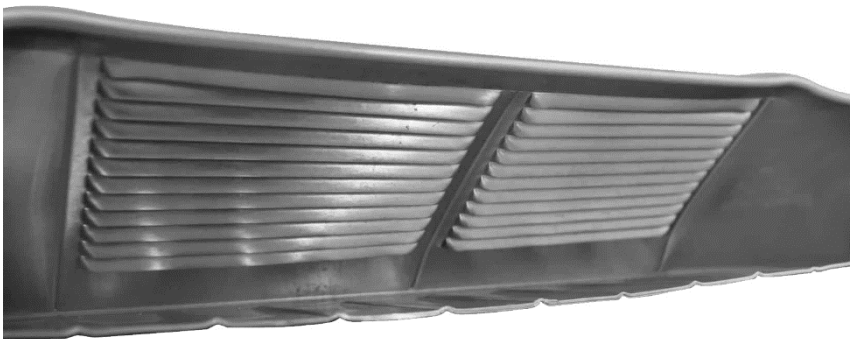
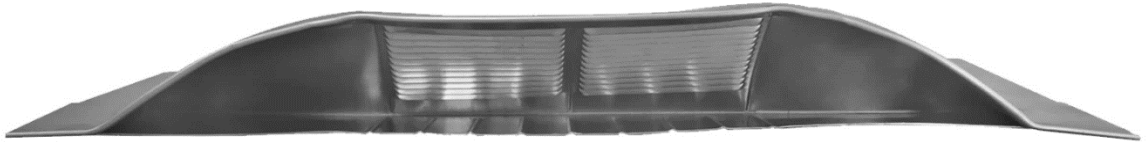
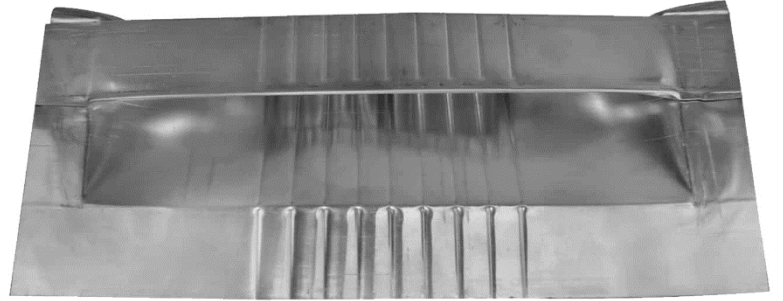
Ecological HVAC Supply & Engineering
1-888-514-1516, (626) 771-0048, F: (626) 771-0047
sales@ventdepot.com www.VentDepot.com



VersaVent

Data Sheet

Gallery Image of Universal Vents Off-Ridge Vents, VersaVent.



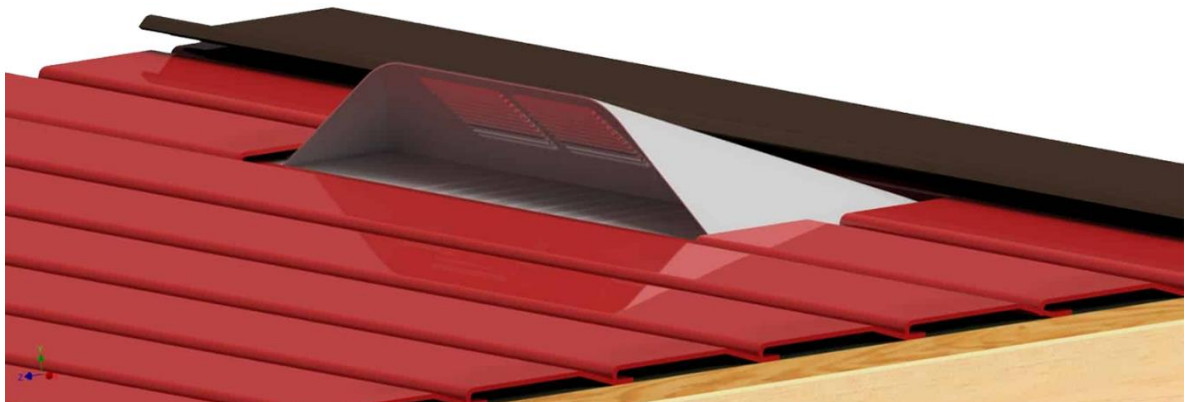
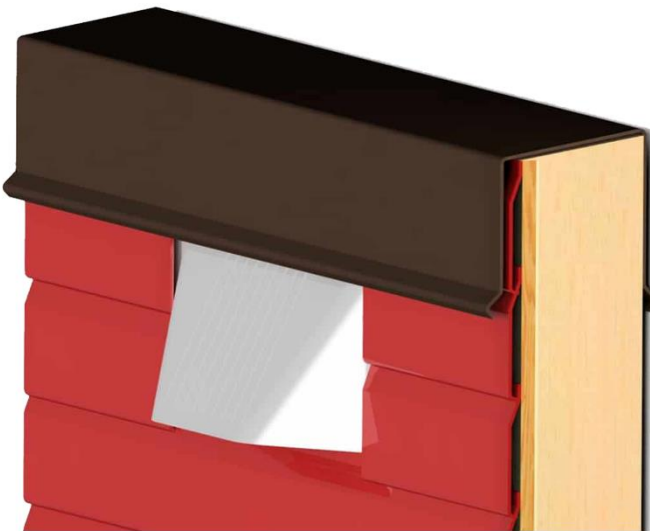
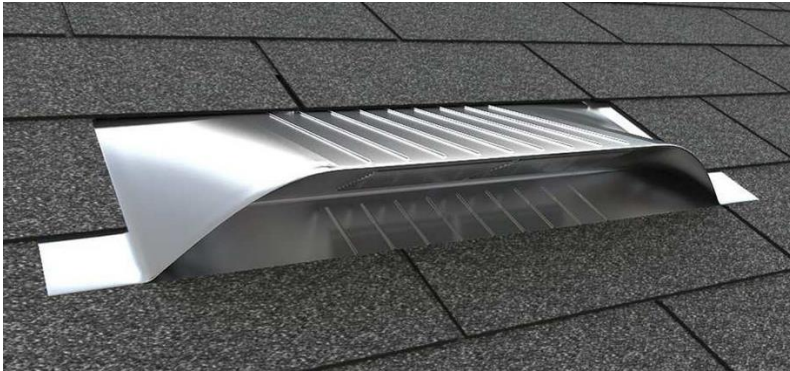
VentDepot .com

Ecological HVAC Supply & Engineering
1-888-514-1516, (626) 771-0048, F: (626) 771-0047
sales@ventdepot.com www.VentDepot.com



VersaVent

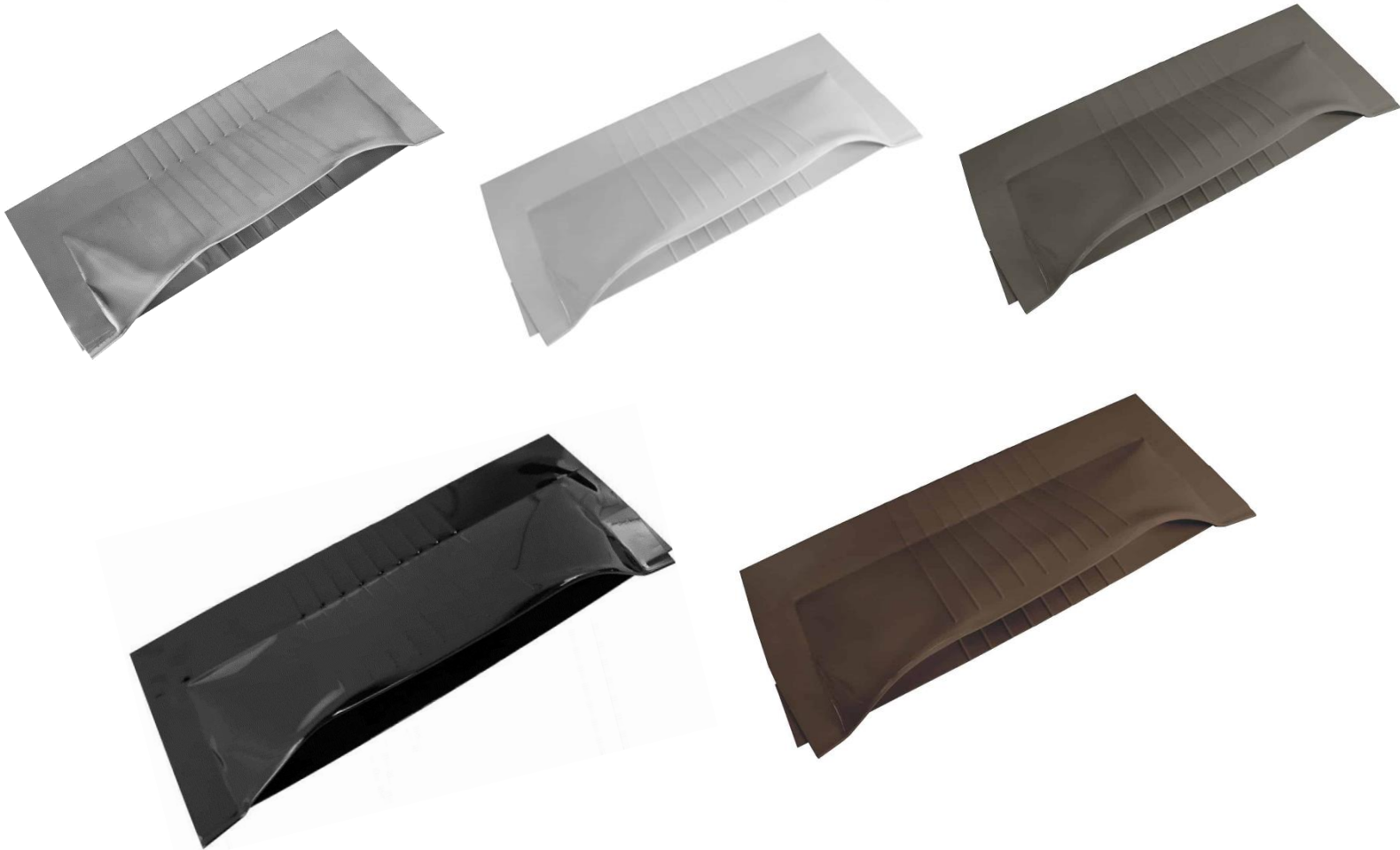
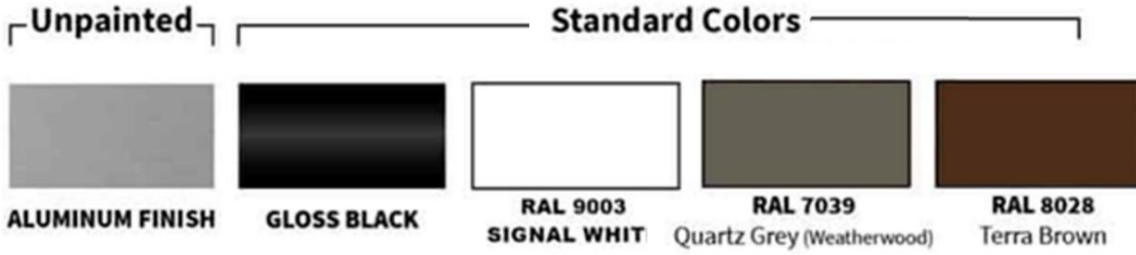
Data Sheet





VersaVent

Data Sheet



ID	Author	Description Error	Description Update	Supervisor Name
V1	Marcela Roldán	Technical Sheet Nueva	Technical Sheet Nueva	J.L.