

## General Characteristics of AlumFlat Flat Roof Mounting Base for Turbine Ventilators

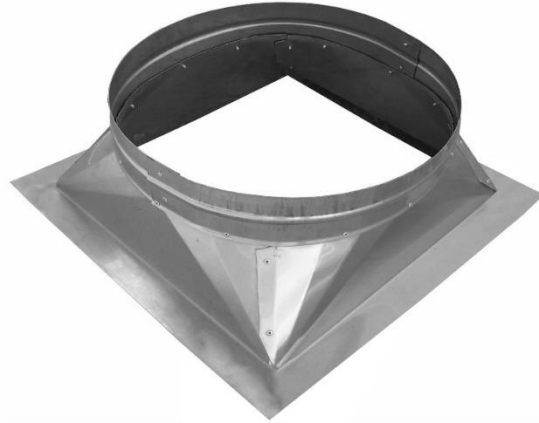
The AlumFlat is an aluminum flat base. These bases will installed, stop turbines from water leaking. The AlumFlat permits the wind turbine vent to operate correctly. The turbine must be leveled horizontally to work properly. The AlumFlat Bases are made of Sheet Aluminum, with excellent manufacturing detail.

## Product Applications of AlumFlat Flat Roof Mounting Base for Turbine Ventilators

These bases are used with our Turbine Vents for ventilation in small, medium, and large areas, bathrooms, warehouses, factories, commercial buildings, and all large ventilation projects.

## Warranty of AlumFlat Flat Roof Mounting Base for Turbine Ventilators

Manufacturer's Limited Warranty: 10 Years, void with Tornados, Hurricanes, Not intended for Chimneys, and Chemical Destruction. These products are built to order, they are non-returnable or refundable.



**Technical Characteristics of AlumFlat Flat Roof Mounting Base for Turbine Ventilators**

VentDepot Item #	Provider Code	Material	Base Dimensions				Weight		Shipping Size					
			Turbine Diameter	Base Height	Flange	Square Opening	lb	kg	L		W		H	
			ØA in	B in	D in	C in			in	cm	in	cm	in	cm
USAMF-001	FB04A	Aluminum	4	10	4	6x6	5	2	6	15	6	15	12	30
USAMF-002	FB05A	Aluminum	5	10	4	8x8	7	3	8	20	8	20	12	30
USAMF-003	FB06A	Aluminum	6	10	4	8x8	7	3	8	20	8	20	12	30
USAMF-004	FB07A	Aluminum	7	10	4	10x10	8	4	10	25	10	25	12	30
USAMF-005	FB08A	Aluminum	8	10	4	10x10	8	4	10	25	10	25	12	30
USAMF-006	FB09A	Aluminum	9	10	4	12x12	11	5	12	30	12	30	12	30
USAMF-007	FB10A	Aluminum	10	10	4	12x12	11	5	12	30	12	30	12	30
USAMF-008	FB12A	Aluminum	12	10	4	14x14	13	6	14	36	14	36	12	30
USAMF-009	FB14A	Aluminum	14	10	4	16x16	21	10	16	41	16	41	12	30
USAMF-011	FB16A	Aluminum	16	10	4	18x18	31	14	18	46	18	46	12	30
USAMF-012	FB18A	Aluminum	18	10	4	22x22	38	17	22	56	22	56	12	30
USAMF-013	FB20A	Aluminum	20	10	4	24x24	46	21	24	61	24	61	12	30
USAMF-014	FB24A	Aluminum	24	12	4	30x30	58	26	30	76	30	76	14	36

