

**General Characteristics of Flat Roof Mounting Base StainlessFlat**

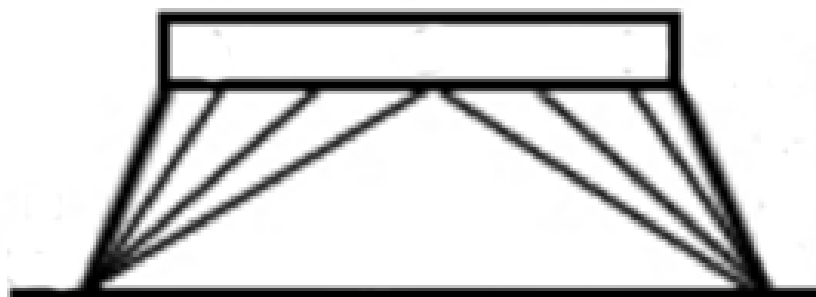
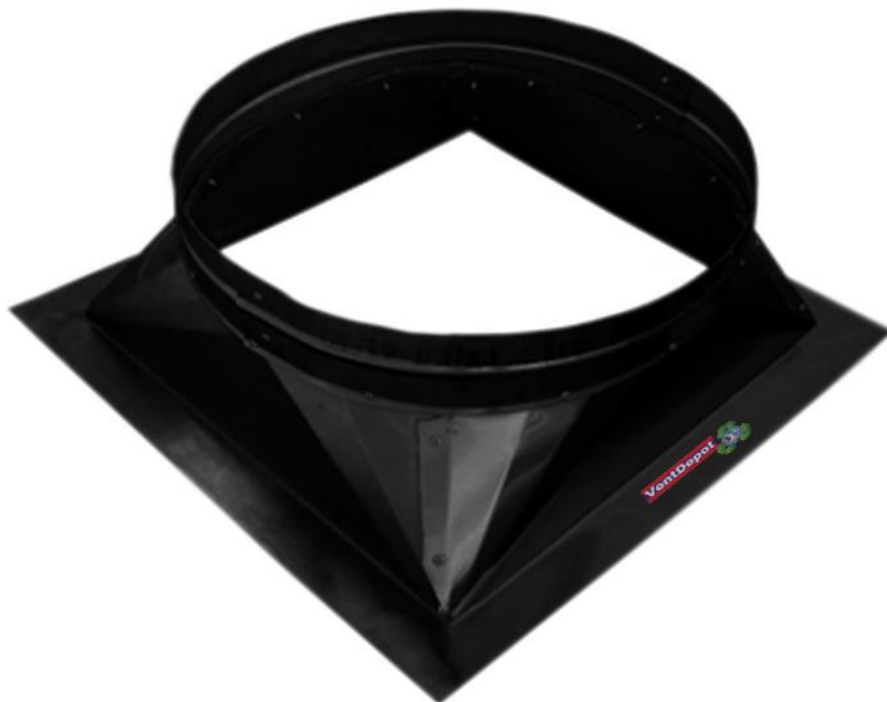
The StainlessFlat is a Stainless made flat base made for Stainless turbines.  
 Installed properly the flat bases will stop the turbines from leaking water.  
 For Industrial, commercial and residential use.  
 Outdoor use only.  
 Perfect for ventilation, cooling and the extraction of fumes, dust, smoke, pollen or gases etc.  
 The StainlessFlat bases are made from sheet Stainless, with excellent manufacturing detail.  
 The Stainless bases for the turbines, allow them to operate correctly and more efficiently.  
 All turbines and bases must be leveled horizontally for them to work properly and have proper air flow.

**Product Applications of Flat Roof Mounting Base StainlessFlat**

These bases are used with our Turbine Vents for ventilation in small, medium, and large areas, bathrooms, warehouses, factories, commercial buildings, and all large ventilation projects.  
 For residential, commercial and industrial use.  
 Used outdoors.

**Warranties of Flat Roof Mounting Base StainlessFlat**

Manufacturer's Limited Warranty: 10 Years, void with Tornados, Hurricanes, and Chemical Destruction

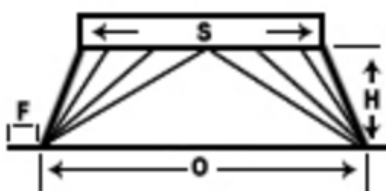


**Specific characteristics of Flat Roof Mounting Base StainlessFlat**

Item #	Manufacturing #	Diameter (S) In.	Material	Base Height (H) In.	Roof Opening (O) In.	Flange (F) In.	Weight and Dimension with Packaging	
							Lbs.	L,W,H In.
USSSF-001	FB04SS	04	Stainless	10	6x6	4	7	18,18,18
USSSF-002	FB05SS	05	Stainless	10	8x8	4	9	18,18,18
USSSF-003	FB06SS	06	Stainless	10	8x8	4	9	22,22,18
USSSF-004	FB07SS	07	Stainless	10	10x10	4	10	22,22,18
USSSF-005	FB08SS	08	Stainless	10	10x10	4	10	26,26,18
USSSF-006	FB09SS	09	Stainless	10	12x12	4	13	26,26,18
USSSF-007	FB10SS	10	Stainless	10	12x12	4	13	26,26,18
USSSF-008	FB12SS	12	Stainless	10	14x14	4	15	32,32,18
USSSF-009	FB14SS	14	Stainless	10	16x16	4	23	32,32,18
USSSF-010	FB16SS	16	Stainless	10	18x18	4	33	32,32,18
USSSF-011	FB18SS	18	Stainless	10	22x22	4	40	38,38,18
USSSF-012	FB20SS	20	Stainless	10	24x24	4	48	38,38,18
USSSF-013	FB24SS	24	Stainless	12	30x30	4	60	42,42,26

**Dimensions (in) of Flat Roof Mounting Base StainlessFlat**

Series	Length		Width		Height	
	A		B		C	
USSSF-001 & 002	16"		16"		16"	
USSSF-003 & 004	20"		20"		16"	
USSSF-005 to 007	24"		24"		16"	
USSSF-008 to 010	30"		30"		16"	
USSSF-011 & 012	36"		36"		24"	
USSSF-013					24"	



**Short Description of Flat Roof Mounting Base StainlessFlat**

Item #	Manufacturing #	Short Description 70 Characters Maximum	
		012345678901234567890123456789012345678901234567890123456789	
<b>USSSF-001</b>	FB04SS	Ø4" Neck, Base Height 10", Flange 4", Roof Opening 6"x6", Stainless Flat Base.	
<b>USSSF-002</b>	FB05SS	Ø5" Neck, Base Height 10", Flange 4", Roof Opening 8"x8", Stainless Flat Base.	
<b>USSSF-003</b>	FB06SS	Ø6" Neck, Base Height 10", Flange 4", Roof Opening 8"x8", Stainless Flat Base.	
<b>USSSF-004</b>	FB07SS	Ø7" Neck, Base Height 10", Flange 4", Roof Opening 10"x10", Stainless Flat Base.	
<b>USSSF-005</b>	FB08SS	Ø8" Neck, Base Height 10", Flange 4", Roof Opening 10"x10", Stainless Flat Base.	
<b>USSSF-006</b>	FB09SS	Ø9" Neck, Base Height 10", Flange 4", Roof Opening 12"x12", Stainless Flat Base.	
<b>USSSF-007</b>	FB10SS	10" Neck, Base Height 10", Flange 4", Roof Opening 12"x12", Stainless Flat Base.	
<b>USSSF-008</b>	FB12SS	12" Neck, Base Height 10", Flange 4", Roof Opening 14"x14", Stainless Flat Base.	
<b>USSSF-009</b>	FB14SS	14" Neck, Base Height 10", Flange 4", Roof Opening 16"x16", Stainless Flat Base.	
<b>USSSF-010</b>	FB16SS	16" Neck, Base Height 10", Flange 4", Roof Opening 18"x18", Stainless Flat Base.	
<b>USSSF-011</b>	FB18SS	18" Neck, Base Height 10", Flange 4", Roof Opening 22"x22", Stainless Flat Base.	
<b>USSSF-012</b>	FB20SS	20" Neck, Base Height 10", Flange 4", Roof Opening 24"x24", Stainless Flat Base.	
<b>USSSF-013</b>	FB24SS	24" Neck, Base Height 12", Flange 4", Roof Opening 30"x30", Stainless Flat Base.	

**SEO Table of Flat Roof Mounting Base StainlessFlat**

Title
Flat Roof Mounting Base Stainless StainlessFlat.
Meta Description
Flat Roof Mounting Base Stainless StainlessFlat for Commercial Use, Flat Roof Mounting Base Stainless StainlessFlat for Industrial Use, Flat Roof Mounting Base Stainless StainlessFlat for Residential Use, Flat Roof Mounting Base Stainless StainlessFlat for Outdoor Use, Flat Roof Mounting Base Stainless StainlessFlat for Ventilation Use, Flat Roof Mounting Base Stainless StainlessFlat for Cooling Use, Flat Roof Mounting Base Stainless StainlessFlat for Extraction Use.
Meta Key Words
at Roof Mounting Base Stainless StainlessFlat for Commercial Use, Flat Roof Mounting Base Stainless StainlessFlat for Industrial Use, Flat Roof Mounting Base Stainless StainlessFlat for Residential Use, Flat Roof Mounting Base Stainless StainlessFlat for Outdoor Use, Flat Roof Mounting Base Stainless StainlessFlat for Ventilation Use, Flat Roof Mounting Base Stainless StainlessFlat for Cooling Use, Flat Roof Mounting Base Stainless StainlessFlat for Extraction Use.
Meta URL (file name)
flat-roof-mounting-base-stainless-stainlessflat-us-english.htm

**Product Line Description of Flat Roof Mounting Base StainlessFlat**

<FONT Size=1> <b>Type:</b> Flat Roof Mounting Base Stainless StainlessFlat                      <b>Neck Diameters:</b> 4,5,6,7,8,9,10,12,14,16,18,20, & 24                      <b>Base Type:</b> Flat Base                      <b>Material:<b> Stainless                      <b>Finish:</b> Natural                      <b>Color:</b> Natural Stainless                      <b>Use:</b> Turbine Vents for Ventilation in small, medium and large areas, Industrial, Commercial, and Residential                      <b>Warranty:</b> 10 years                      <b>Ship By:</b> LTL Freight                      </FONT>
---