

General Characteristics of Flat Roof Mounting Base StainlessFlat

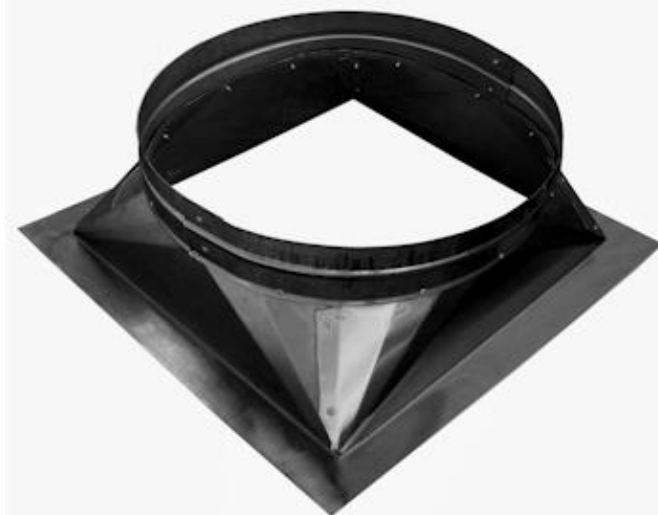
The CopperFlat is a Copper made flat base made for copper turbines.
 Installed properly the flat bases will stop the turbines from leaking water.
 For Industrial, commercial and residential use.
 Outdoor use only.
 Perfect for ventilation, cooling and the extraction of fumes, dust, smoke, pollen or gases ect.
 The CopperFlat bases are made from sheet copper, with excellent manufacturing detail.
 The copper bases for the turbines, allow them to operate correctly and more efficiently.
 All turbines and bases must be leveled horizontally for them to work properly and have proper air flow.

Product Applications of Flat Roof Mounting Base StainlessFlat

These bases are used with our Turbine Vents for ventilation in small, medium, and large areas, bathrooms, warehouses, factories, commercial buildings, and all large ventilation projects.
 For residential, commercial and industrial use.
 Used outdoors.

Warranties of Flat Roof Mounting Base StainlessFlat

Manufacturer's Limited Warranty: 10 Years, void with Tornados, Hurricanes, and Chemical Destruction

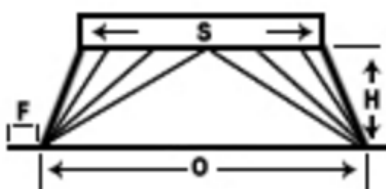


Specific characteristics of Flat Roof Mounting Base StainlessFlat

Item #	Manufacturing #	Diameter (S) In.	Material	Base Height (H) In.	Roof Opening (O) In.	Flange (F) In.	Weight and Dimension with Packaging	
							Lbs.	L,W,H In.
USSSF-001	FB04SS	04	Stainless	10	6x6	4	7	6,6,12
USSSF-002	FB05SS	05	Stainless	10	8x8	4	9	8,8,12
USSSF-003	FB06SS	06	Stainless	10	8x8	4	9	8,8,12
USSSF-004	FB07SS	07	Stainless	10	10x10	4	10	10,10,12
USSSF-005	FB08SS	08	Stainless	10	10x10	4	10	10,10,12
USSSF-006	FB09SS	09	Stainless	10	12x12	4	13	12,12,12
USSSF-007	FB10SS	10	Stainless	10	12x12	4	13	12,12,12
USSSF-008	FB12SS	12	Stainless	10	14x14	4	15	14,14,12
USSSF-009	FB14SS	14	Stainless	10	16x16	4	23	16,16,12
USSSF-010	FB16SS	16	Stainless	10	18x18	4	33	18,18,12
USSSF-011	FB18SS	18	Stainless	10	22x22	4	40	22,22,12
USSSF-012	FB20SS	20	Stainless	10	24x24	4	48	24,24,12
USSSF-013	FB24SS	24	Stainless	12	30x30	4	60	30,30,14
USSSF-014	FB30SS	30	Stainless	12	36x36	4	72	36,36,14

Dimensions (in) of Flat Roof Mounting Base StainlessFlat

Series	Length A	Width B	Height C
USSSF-001 & 002	16"	16"	16"
USSSF-003 & 004	20"	20"	16"
USSSF-005 to 007	24"	24"	16"
USSSF-008 to 010	30"	30"	16"
USSSF-011 & 012	36"	36"	24"
USSSF-013 & 014	40"	40"	24"



Short Description of Flat Roof Mounting Base StainlessFlat

Item #	Manufacturing #	Short Description 70 Characters Maximum
USSSF-001	FB04SS	Ø4", Base Height 10", Flange 4", Roof Opening 6"x6", Stainless Steel.

SEO Table of Flat Roof Mounting Base StainlessFlat

Title
Flat Roof Mounting Base Stainless Steel StainlessFlat.
Meta Description
Flat Roof Mounting Base Stainless Steel StainlessFlat for Commercial Use, Flat Roof Mounting Base Stainless Steel StainlessFlat for Industrial Use, Flat Roof Mounting Base Stainless Steel StainlessFlat for Residential Use, Flat Roof Mounting Base Stainless Steel StainlessFlat for Outdoor Use, Flat Roof Mounting Base Stainless Steel StainlessFlat for Ventilation Use, Flat Roof Mounting Base Stainless Steel StainlessFlat for Cooling Use, Flat Roof Mounting Base Stainless Steel StainlessFlat for Extraction Use.
Meta Key Words
at Roof Mounting Base Stainless Steel StainlessFlat for Commercial Use, Flat Roof Mounting Base Stainless Steel StainlessFlat for Industrial Use, Flat Roof Mounting Base Stainless Steel StainlessFlat for Residential Use, Flat Roof Mounting Base Stainless Steel StainlessFlat for Outdoor Use, Flat Roof Mounting Base Stainless Steel StainlessFlat for Ventilation Use, Flat Roof Mounting Base Stainless Steel StainlessFlat for Cooling Use, Flat Roof Mounting Base Stainless Steel StainlessFlat for Extraction Use.
Meta URL (file name)
flat-roof-mounting-base-stainless-steel-stainlessflat-us-english.htm

Product Line Description of Flat Roof Mounting Base StainlessFlat

```

<FONT Size=1>
<b>Type:</b> Flat Roof Mounting Base Stainless Steel StainlessFlat<br>
<b>Neck Diameters:</b> 4,5,6,7,8,9,10,12,14,16,18,20,24 & 30<br>
<b>Base Type:</b> Flat Base<br>
<b>Material:</b> Stainless Steel<br>
<b>Finish:</b> Natural<br>
<b>Color:</b> Natural Stainless Steel<br>
<b>Use:</b> Turbine Vents for Ventilation in small, medium and large areas, Industrial, Commercial, and Residential<br>
<b>Warranty:</b> 10 years<br>
<b>Ship By:</b> LTL Freight<br>
</FONT>
    
```