



General Characteristics of SB Series Industrial Direct Driven Suspension Blowers

The SB Series is a permanently lubricated, Direct Driven portable blower. Can be used in industrial or commercial areas. For indoor or outdoor use. Used for cooling and high volume air movement. The Blades are made of aluminum and come in the three sizes, 30"Ø, 36"Ø & 48"Ø. Comes with a SJT type 3 conductor, 12' cord and on-off rocker switch (available only on the 120V, 1-phase models.) For Safety the SB Series are designed with powder coated front and rear guards. The housing is made from a corrosion and dent proof high density polyethylene. Motor Specifications: 1 phase, 120V, 2 Speed on the 30-36 models, 1 speed on 42" models. Mounting chain not included. The motor is designed with a ball bearing system & permanent split capacitor. These products are ETL-CETL listed. Note: All products listed are in this section are custom built and subject to 100% cancellation/restocking charges. The photograph is a representation of stocked models actual models may vary in appearance. The SB Series meets OSHA. Made in the U.S.A.



Product Applications of SB Series Industrial Direct Driven Suspension Blowers

For industrial and commercial use. Used for cooling factories, shops, bakeries, loading docks, laundries, gymnasiums, warehouses, aircraft hangars, and virtually any place a high volume of air movement is required. For indoor and outdoor use.

Warranty of SB Series Industrial Direct Driven Suspension Blowers

Manufacturer's Warranty: 1 year.

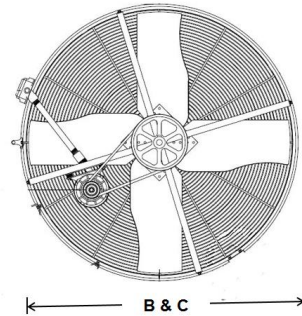
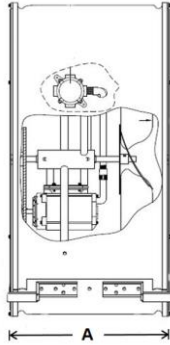
Specific Characteristics of SB Series Industrial Direct Driven Suspension Blowers

Item #	Manufacturing #	Size (In.)	CFM		Motor HP	RPM High	Volts V	Amperes A	Weight and Dimensions with Packaging	
			High	Low					Lbs.	L,W,H In.
USSBS-001	SB 30-D	30	6000	4800	1/4	1050	120	2.5	60	27,36,36
USSBS-002	SB 36-D	36	7000	5900	1/3	1050	120	5.6	72	27,42,42
USSBS-003	SB 42-D	42	10000		1/2	825	120	7.9	101	27,48,48



Dimensions (In.) of SB Series Industrial Direct Driven Suspension Blowers

Series	Length A	Width B	Height C
USSBS-001	25 1/2"	40 5/8"	40 5/8"
USSBS-002	25 1/2"	46 1/4"	46 1/4"
USSBS-003	25 1/2"	52 1/2"	52 1/2"



Short Description of SB Series Industrial Direct Driven Suspension Blowers

Item #	Manufacturing #	Short Description 70 Characters Maximum
USSBS-001	SB 36-B	Size 36", Motor Type 115V HP 1/2, 9000 CFM, 500 RPM, 8A.

SEO Table of SB Series Industrial Direct Driven Suspension Blowers

Title
TPI SB Series Floor Industrial Direct Driven Suspension Blowers.
Meta Description
TPI SB Series Floor Industrial Direct Driven Suspension Blowers for Industrial Use, TPI SB Series Floor Industrial Direct Driven Suspension Blowers for Commercial use, TPI SB Series Floor Industrial Direct Driven Suspension Blowers for Indoor Use, TPI SB Series Floor Industrial Direct Driven Suspension Blowers for Outdoor Use, TPI SB Series Floor Industrial Direct Driven Suspension Blowers for Cooling Use, TPI SB Series Floor Industrial Direct Driven Suspension Blowers for High Air Volume Movement Use.
Meta Key Words
TPI SB Series Floor Industrial Direct Driven Suspension Blowers for Industrial Use, TPI SB Series Floor Industrial Direct Driven Suspension Blowers for Commercial use, TPI SB Series Floor Industrial Direct Driven Suspension Blowers for Indoor Use, TPI SB Series Floor Industrial Direct Driven Suspension Blowers for Outdoor Use, TPI SB Series Floor Industrial Direct Driven Suspension Blowers for Cooling Use, TPI SB Series Floor Industrial Direct Driven Suspension Blowers for High Air Volume Movement Use.
Meta URL (file name)
Tpi-sb-series-industrial-belt-driven-suspension-blowers-us-english.htm

Product Line Description of SB Series Industrial Direct Driven Suspension Blowers

 Type: TPI SB Series Floor Industrial Direct Driven Suspension Blowers

 Drive Type: Direct Drive

 Motor Type: Open

 Manufacturer: TPI

 Model Series: SB

 Voltage: 120V

 Horse Power: 1/2, 3/4 & 1HP

 Diameters: 36", 42" & 48"

 Air Flow: 9000, 13800 & 15000

 Weather Rating: Outdoor/Indoor

 Ship By: Free LTL Freight

