



# PitchRectangle3

## Data Sheet

### General Characteristics of the Pitch Pan or Pitch Pocket, PitchRectangle3.

A pitch pan is a flanged, open-bottom, metal container that wraps around roof penetrations. They are then filled with mastic material to provide a water-tight seal. In other words, a pitch pan is a retrofit roof flashing kit. Also known as a pitch pocket, they function as a container to hold fluid sealant to seal all roof penetrations. They effectively secure odd-shaped penetrations to prevent leaks. Some of these roof penetrations may include electrical conduits, I-beam supports or plumbing.

Open pitch pans-pitch pockets are used to flash roof penetrations that would be difficult to flash in any other way. They have been designed to work with all roof types such as TPO, PVC, and EPDM. Pitch pans are also used with all HVAC systems to ensure a leak-proof seal. AVP's pitch pocket will prevent leaks from occurring right at the roof penetration.

The open pitch pocket design is ideal for wrapping around electrical conduits, I-beam supports, and plumbing. This allows for easy installation while eliminating the risk of leakage.

AVP offers an array of sizes and heights to fit the needs of all roof types in all climate zones. Some roofing specifications require shorter pitch pockets while others require taller ones. As a result, AVP's pitch pan heights range from 3 inches to 8 inches.

AVP's pitch pan shapes also vary from square boxes to rectangular boxes. Square pitch pockets are ideal for containing single penetrations; while on the other hand, the rectangle pitch pockets are made to contain multiple small penetrations close together.

As a result, every customer will be able to find a pitch pocket to fit all roofing needs.

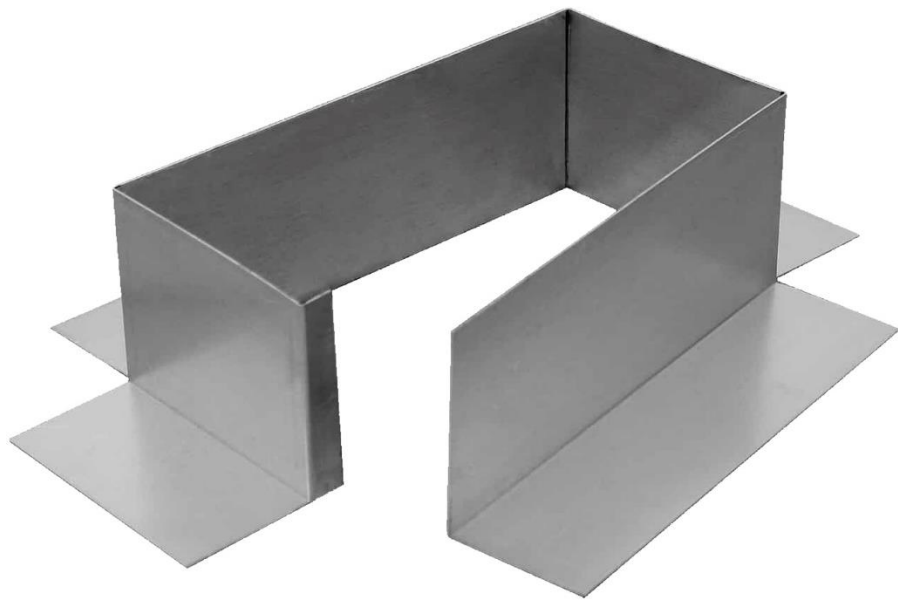
Made from durable heavy gauge rust-free aluminum, AVP's pitch pockets will last and keep the roof protected.

### Product Applications of the Pitch Pan or Pitch Pocket, PitchRectangle3.

It can be used in residential, commercial, industrial, agricultural, storage facilities, and refrigeration and freezing installations. It can be employed in various environments to provide thermal insulation and moisture protection in the area where the roof meets the exterior walls of the building.

### Warranty of the Pitch Pan or Pitch Pocket, PitchRectangle3.

Manufacturer's Warranty: 1-Year



**Active  
Ventilation  
Products**



# PitchRectangle3

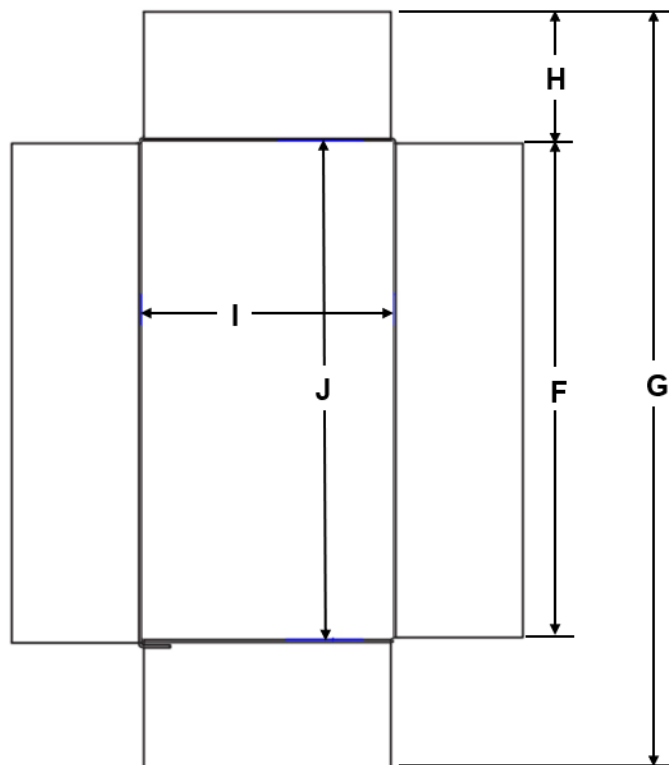
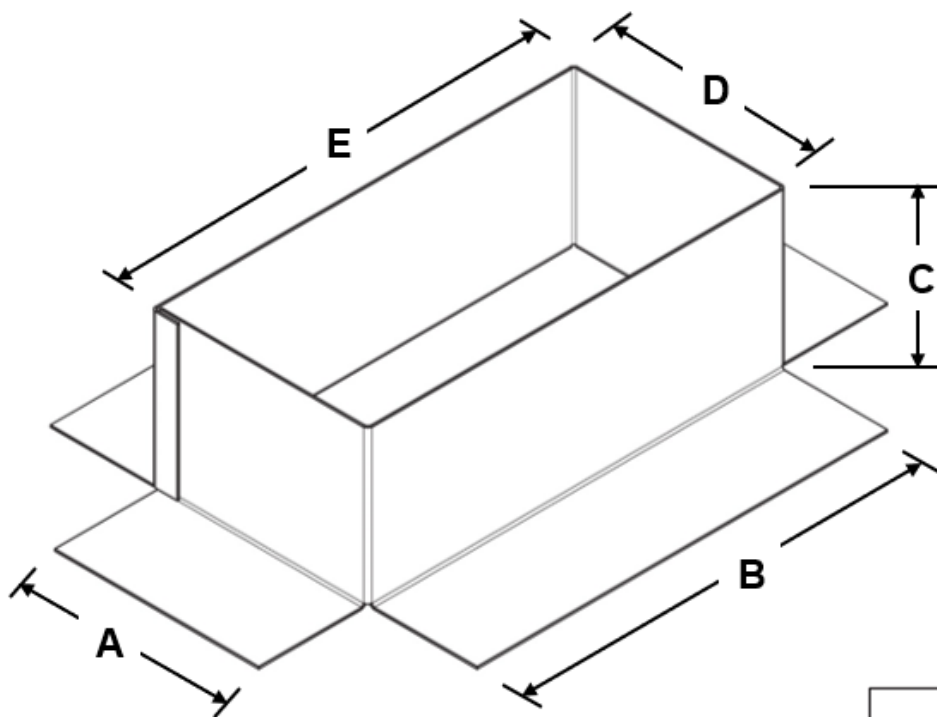
## Data Sheet

### Specific Characteristics of the Pitch Pan or Pitch Pocket, PitchRectangle3.

Item #	Manufacturing #	Height	Square Section Diameter Length x Width	Weight and Dimensions with Packaging	
				Lbs.	W,H,D In
USPRA-001	PP-4x8-H3	3"	8" x 4"	2.2	8,12,3
USPRA-002	PP-6X12-H3	3"	12" x 6"	2.4	10,16,3
USPRA-003	PP-8X18-H3	3"	18" x 8"	2.6	12,22,3

### Dimensions (In.) of the Pitch Pan or Pitch Pocket, PitchRectangle3.

Series		A	B	C	D	E	F	G	H	I	J
USPRA-001	PP-4X8-H3	4"	8"	3"	4"	8"	8"	12"	2"	4"	8"
USPRA-002	PP-6X12-H3	6"	12"	3"	6"	12"	12"	16"	2"	6"	12"
USPRA-003	PP-8X18-H3	8"	18"	3"	8"	18"	18"	22"	2"	8"	18"

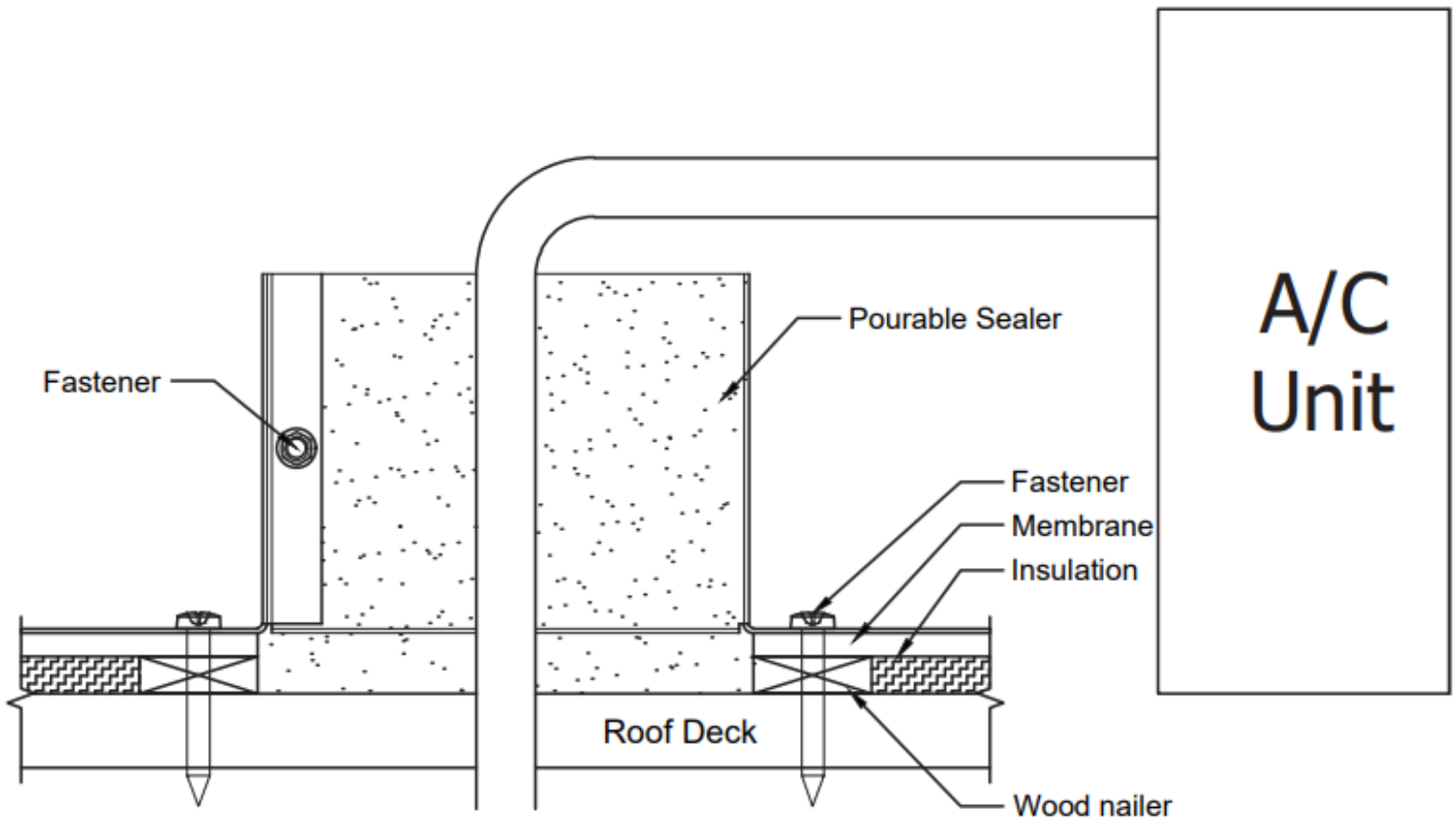


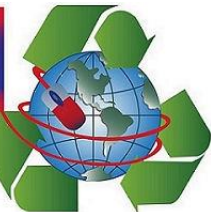


# PitchRectangle3

Data Sheet

Gallery Image of the Pitch Pan or Pitch Pocket, PitchRectangle3.

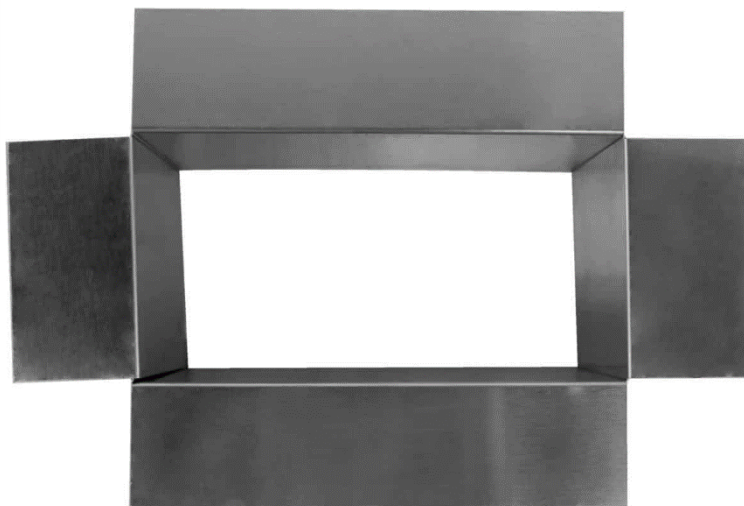




# PitchRectangle3

Data Sheet

Gallery Image of the Pitch Pan or Pitch Pocket, PitchRectangle3.



**VentDepot.com**

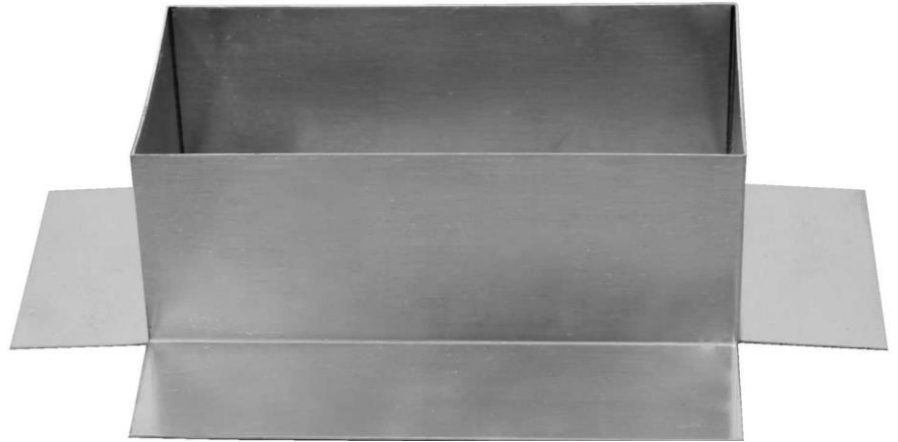
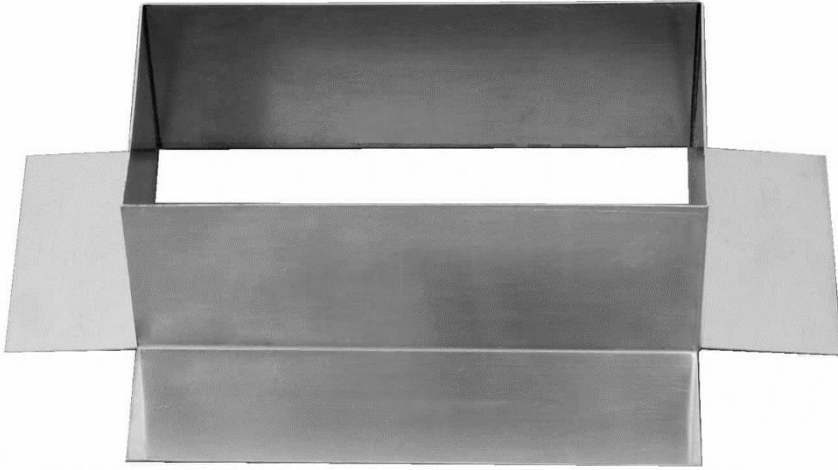
Ecological HVAC Supply & Engineering  
1-888-514-1516, (626) 771-0048, F: (626) 771-0047  
sales@ventdepot.com www.VentDepot.com



# PitchRectangle3

Data Sheet

Gallery Image of the Pitch Pan or Pitch Pocket, PitchRectangle3.



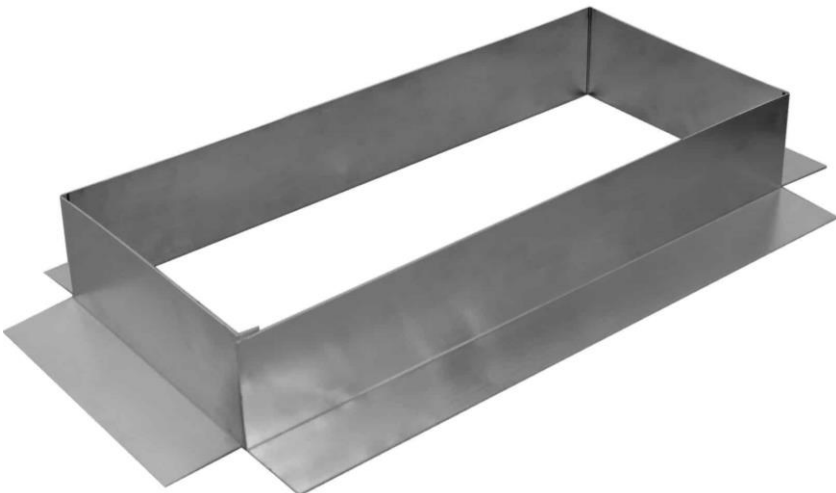
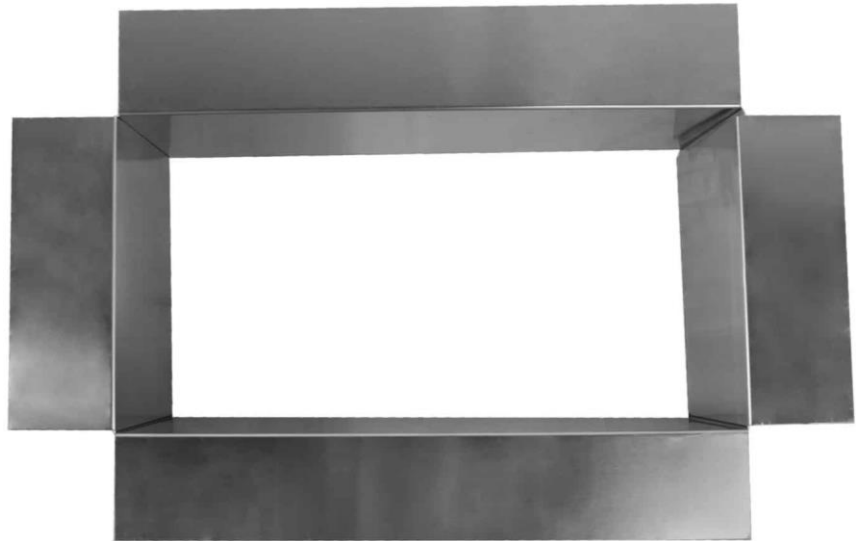
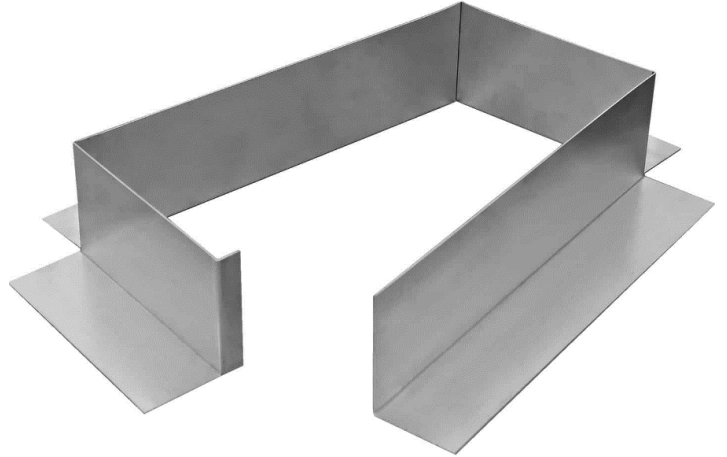




# PitchRectangle3

Data Sheet

Gallery Image of the Pitch Pan or Pitch Pocket, PitchRectangle3.

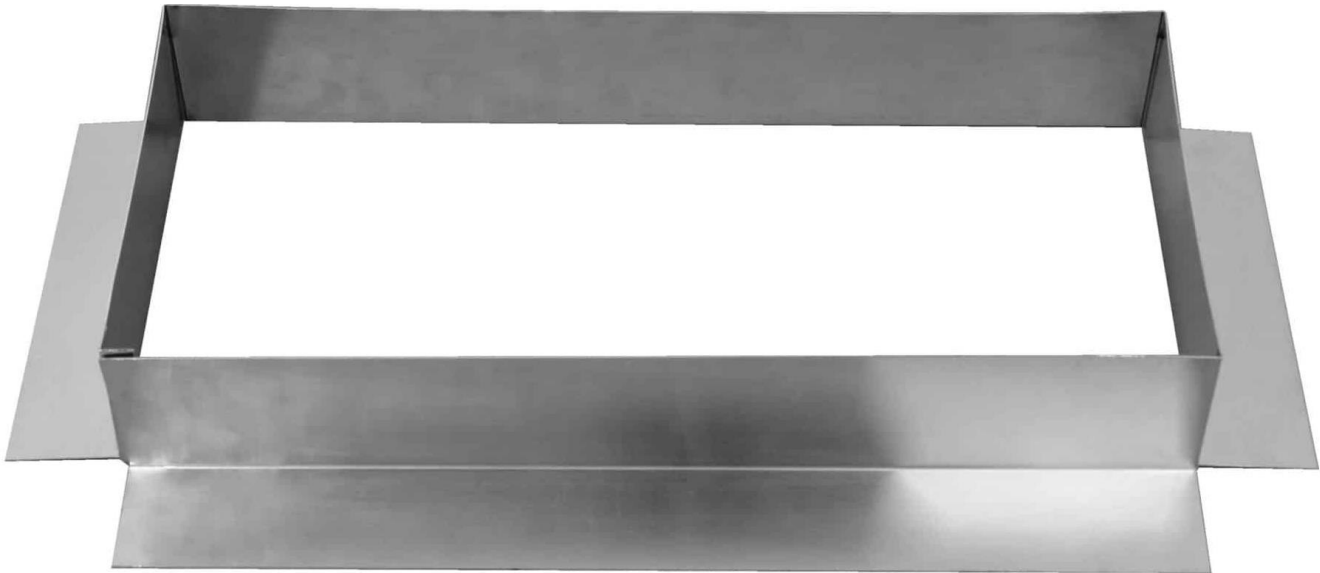




# PitchRectangle3

Data Sheet

Gallery Image of the Pitch Pan or Pitch Pocket, PitchRectangle3.



ID	Author	Description Error	Description Update	Supervisor Name
V1	Marcela Roldán	New Specification Sheet	New Specification Sheet	J.L.