

**General Characteristics 3340 Series Heavy Duty Wall Heater
Color Brown**

Dual vane axial fan blades.
Lockable disconnect switch.
Automatic purge.
Manual reset thermal limit.
Low voltage control.
Steel block fin elements
Optional built in thermostat with 40° - 110°F range.
Heavy duty 18 ga. powder coated grille.
Extruded aluminum trim frame, no visible screws.
4" Surface mounting frame included (3340EX32).
Rough in dimensions 30-1/2 in wide x 19-1/2 in high x 4" deep.
When ordered without thermostat, terminal block included for field connection of remote low voltage single stage thermostat.
Optional BMS relay requires field supplied 24V source.
Optional 2" semi recess frame available (3340EX16).
Made in U.S.A.

**Product Applications 3340 Series Heavy Duty Wall Heater
Color Brown**

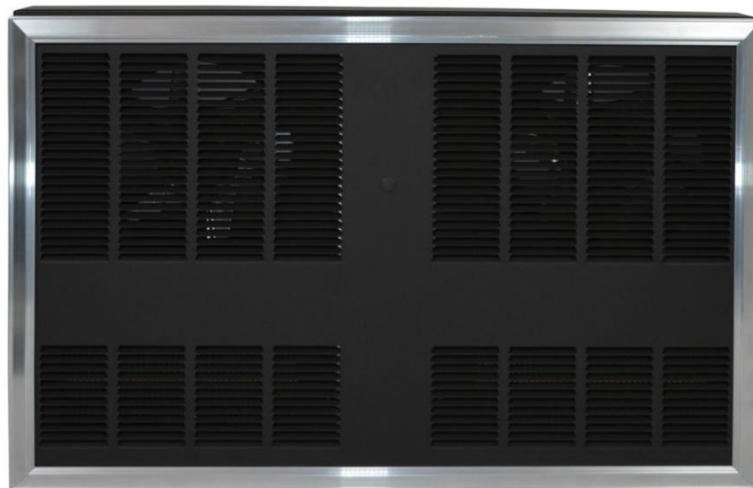
Furnish and install heavy-duty forced air wall heaters, where specified. The heaters shall be constructed of a heavy 18 gauge steel housing with an extruded Aluminum frame. The rough-in dimensions are 30 1/2" Wide x 19 1/2" High x 4" Deep. The units shall be available in ratings of 6000, 8000, & 9600 watts at 208 volt (1 or 3Ø), 240 volt (1 or 3Ø), 277 volt (1Ø), & 480 volt (1 or 3Ø).

The heaters shall have (2) low-speed 600 RPM, 4-pole motors which drives vane axial blowers to deliver a quiet 350 CFM of down flow air. The two heating elements shall be of the sealed tubular type with large, parallel steel fins for quick heat transfer. Units shall have as a standard, a manual reset thermal overload cut-off for added safety, fan delay switch, and manual disconnect switch.

Optional built-in tamper proof thermostat which shall be calibrated to provide a range of 0°F. to 110°F. An optional 24 volt control relay* shall be installed for control from building management system (BMS). Optional accessory shall include a semi-recess mounting adapter and a 16 gauge heavy duty grille. All heaters shall be listed by ETL.

**Warranties 3340 Series Heavy Duty Wall Heater Color
Brown**

Manufacturer's Limited Warranty: 1 Year.





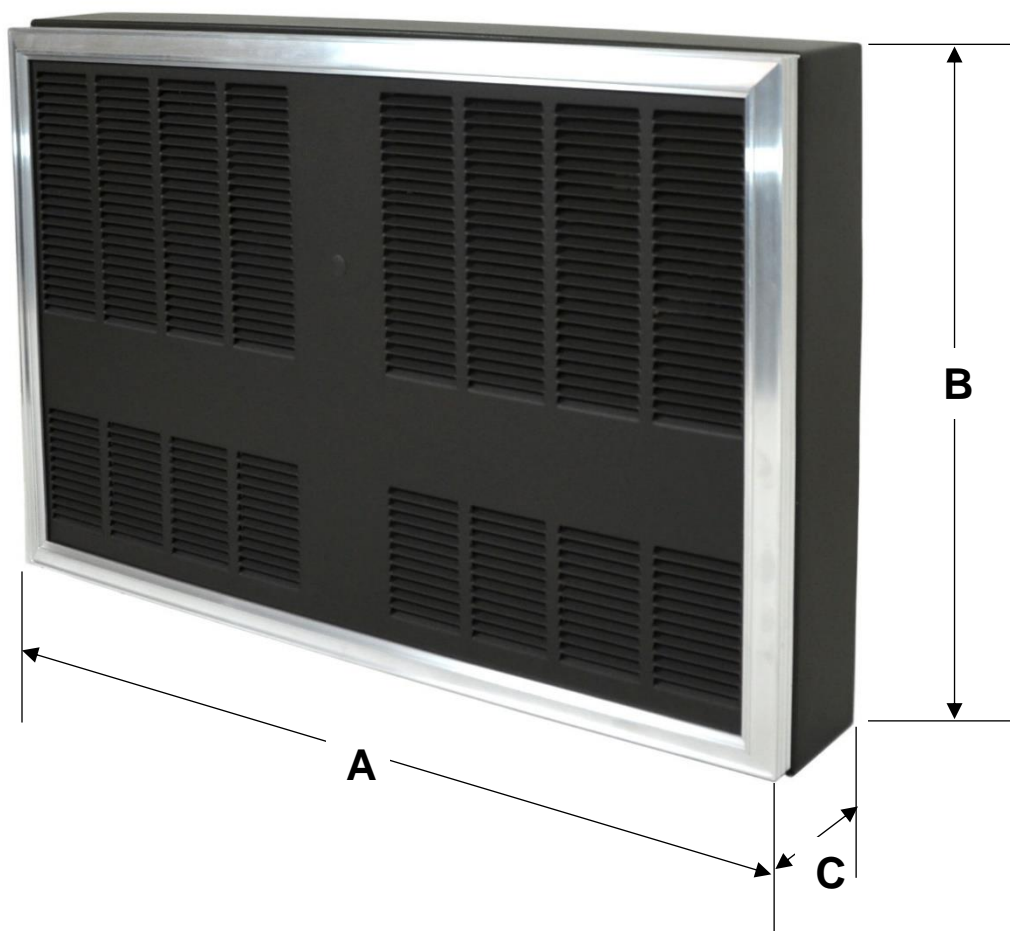
Specific Characteristics 3340 Series Heavy Duty Wall Heater Color Brown

| Item # | KW | BTU's | Volts | PH | Amps | CFM | RPM | Color | Models | Weight and Dimensions with Packaging (CM) | |
|-----------|------|-------|-------|----|-------|-----|-----|-------|---------------------|---|----------|
| | | | | | | | | | | Lbs | W, H, D |
| USRKO-001 | 6000 | 20478 | 208 | 1 | 30.64 | 350 | 600 | brown | No Stat / No Relay | 68 | 77,49,11 |
| USRKO-002 | 6000 | 20478 | 240 | 1 | 26.6 | 350 | 600 | brown | No Stat / No Relay | 68 | 77,49,11 |
| USRKO-003 | 6000 | 20478 | 277 | 1 | 23.3 | 350 | 600 | brown | No Stat / No Relay | 68 | 77,49,11 |
| USRKO-004 | 6000 | 20478 | 208 | 3 | 18.5 | 350 | 600 | brown | No Stat / No Relay | 68 | 77,49,11 |
| USRKO-005 | 6000 | 20478 | 240 | 3 | 16.1 | 350 | 600 | brown | No Stat / No Relay | 68 | 77,49,11 |
| USRKO-006 | 6000 | 20478 | 480 | 3 | 8.0 | 350 | 600 | brown | No Stat / No Relay | 68 | 77,49,11 |
| USRKO-007 | 6000 | 20478 | 208 | 1 | 30.64 | 350 | 600 | brown | With Stat Only | 68 | 77,49,11 |
| USRKO-008 | 6000 | 20478 | 240 | 1 | 26.6 | 350 | 600 | brown | With Stat Only | 68 | 77,49,11 |
| USRKO-009 | 6000 | 20478 | 277 | 1 | 23.3 | 350 | 600 | brown | With Stat Only | 68 | 77,49,11 |
| USRKO-010 | 6000 | 20478 | 208 | 3 | 18.5 | 350 | 600 | brown | With Stat Only | 68 | 77,49,11 |
| USRKO-011 | 6000 | 20478 | 240 | 3 | 16.1 | 350 | 600 | brown | With Stat Only | 68 | 77,49,11 |
| USRKO-012 | 6000 | 20478 | 480 | 3 | 8.0 | 350 | 600 | brown | With Stat Only | 68 | 77,49,11 |
| USRKO-013 | 6000 | 20478 | 208 | 1 | 30.64 | 350 | 600 | brown | Relay Only | 68 | 77,49,11 |
| USRKO-014 | 6000 | 20478 | 240 | 1 | 26.6 | 350 | 600 | brown | Relay Only | 68 | 77,49,11 |
| USRKO-015 | 6000 | 20478 | 277 | 1 | 23.3 | 350 | 600 | brown | Relay Only | 68 | 77,49,11 |
| USRKO-016 | 6000 | 20478 | 208 | 3 | 18.5 | 350 | 600 | brown | Relay Only | 68 | 77,49,11 |
| USRKO-017 | 6000 | 20478 | 240 | 3 | 16.1 | 350 | 600 | brown | Relay Only | 68 | 77,49,11 |
| USRKO-018 | 6000 | 20478 | 480 | 3 | 8.0 | 350 | 600 | brown | Relay Only | 68 | 77,49,11 |
| USRKO-019 | 6000 | 20478 | 208 | 1 | 30.64 | 350 | 600 | brown | With Stat and Relay | 68 | 77,49,11 |
| USRKO-020 | 6000 | 20478 | 240 | 1 | 26.6 | 350 | 600 | brown | With Stat and Relay | 68 | 77,49,11 |
| USRKO-021 | 6000 | 20478 | 277 | 1 | 23.3 | 350 | 600 | brown | With Stat and Relay | 68 | 77,49,11 |
| USRKO-022 | 6000 | 20478 | 208 | 3 | 18.5 | 350 | 600 | brown | With Stat and Relay | 68 | 77,49,11 |
| USRKO-023 | 6000 | 20478 | 240 | 3 | 16.1 | 350 | 600 | brown | With Stat and Relay | 68 | 77,49,11 |
| USRKO-024 | 6000 | 20478 | 480 | 3 | 8.0 | 350 | 600 | brown | With Stat and Relay | 68 | 77,49,11 |
| USRKO-025 | 8000 | 27304 | 277 | 1 | 30.5 | 350 | 600 | brown | No Stat / No Relay | 68 | 77,49,11 |
| USRKO-026 | 8000 | 27304 | 208 | 3 | 24.0 | 350 | 600 | brown | No Stat / No Relay | 68 | 77,49,11 |
| USRKO-027 | 8000 | 27304 | 240 | 3 | 20.9 | 350 | 600 | brown | No Stat / No Relay | 68 | 77,49,11 |
| USRKO-028 | 8000 | 27304 | 480 | 3 | 10.5 | 350 | 600 | brown | No Stat / No Relay | 68 | 77,49,11 |
| USRKO-029 | 8000 | 27304 | 277 | 1 | 30.5 | 350 | 600 | brown | With Stat Only | 68 | 77,49,11 |
| USRKO-030 | 8000 | 27304 | 208 | 3 | 24.0 | 350 | 600 | brown | With Stat Only | 68 | 77,49,11 |
| USRKO-031 | 8000 | 27304 | 240 | 3 | 20.9 | 350 | 600 | brown | With Stat Only | 68 | 77,49,11 |
| USRKO-032 | 8000 | 27304 | 480 | 3 | 10.5 | 350 | 600 | brown | With Stat Only | 68 | 77,49,11 |
| USRKO-033 | 8000 | 27304 | 277 | 1 | 30.5 | 350 | 600 | brown | Relay Only | 68 | 77,49,11 |
| USRKO-034 | 8000 | 27304 | 208 | 3 | 24.0 | 350 | 600 | brown | Relay Only | 68 | 77,49,11 |
| USRKO-035 | 8000 | 27304 | 240 | 3 | 20.9 | 350 | 600 | brown | Relay Only | 68 | 77,49,11 |
| USRKO-036 | 8000 | 27304 | 480 | 3 | 10.5 | 350 | 600 | brown | Relay Only | 68 | 77,49,11 |
| USRKO-037 | 8000 | 27304 | 277 | 1 | 30.5 | 350 | 600 | brown | With Stat and Relay | 68 | 77,49,11 |
| USRKO-038 | 8000 | 27304 | 208 | 3 | 24.0 | 350 | 600 | brown | With Stat and Relay | 68 | 77,49,11 |
| USRKO-039 | 8000 | 27304 | 240 | 3 | 20.9 | 350 | 600 | brown | With Stat and Relay | 68 | 77,49,11 |
| USRKO-040 | 8000 | 27304 | 480 | 3 | 10.5 | 350 | 600 | brown | With Stat and Relay | 68 | 77,49,11 |
| USRKO-041 | 9600 | 32765 | 208 | 3 | 28.5 | 350 | 600 | brown | No Stat / No Relay | 68 | 77,49,11 |
| USRKO-042 | 9600 | 32765 | 240 | 3 | 24.7 | 350 | 600 | brown | No Stat / No Relay | 68 | 77,49,11 |
| USRKO-043 | 9600 | 32765 | 480 | 3 | 12.4 | 350 | 600 | brown | No Stat / No Relay | 68 | 77,49,11 |
| USRKO-044 | 9600 | 32765 | 208 | 3 | 28.5 | 350 | 600 | brown | With Stat Only | 68 | 77,49,11 |
| USRKO-045 | 9600 | 32765 | 240 | 3 | 24.7 | 350 | 600 | brown | With Stat Only | 68 | 77,49,11 |
| USRKO-046 | 9600 | 32765 | 480 | 3 | 12.4 | 350 | 600 | brown | With Stat Only | 68 | 77,49,11 |
| USRKO-047 | 9600 | 32765 | 208 | 3 | 28.5 | 350 | 600 | brown | Relay Only | 68 | 77,49,11 |
| USRKO-048 | 9600 | 32765 | 240 | 3 | 24.7 | 350 | 600 | brown | Relay Only | 68 | 77,49,11 |
| USRKO-049 | 9600 | 32765 | 480 | 3 | 12.4 | 350 | 600 | brown | Relay Only | 68 | 77,49,11 |
| USRKO-050 | 9600 | 32765 | 208 | 3 | 28.5 | 350 | 600 | brown | With Stat and Relay | 68 | 77,49,11 |
| USRKO-051 | 9600 | 32765 | 240 | 3 | 24.7 | 350 | 600 | brown | With Stat and Relay | 68 | 77,49,11 |
| USRKO-052 | 9600 | 32765 | 480 | 3 | 12.4 | 350 | 600 | brown | With Stat and Relay | 68 | 77,49,11 |



Dimensions (in) 3340 Series Heavy Duty Wall Heater Color Brown

| Item # | A | B | C |
|-----------------------|----|----|---|
| USRKO-001 a USRKO-009 | 31 | 20 | 4 |





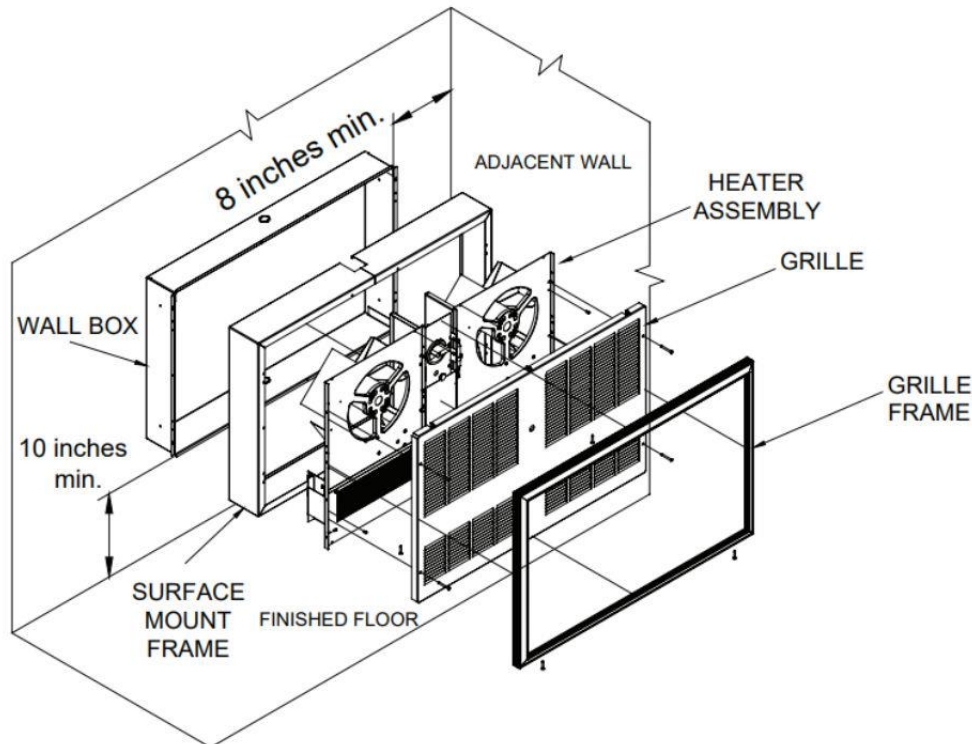
INSTALLATION

The 3340 series shall be installed according to manufacturers installation instructions, the N.E.C. and authorities having jurisdiction. All 3340 series heaters must be grounded per the N.E.C.

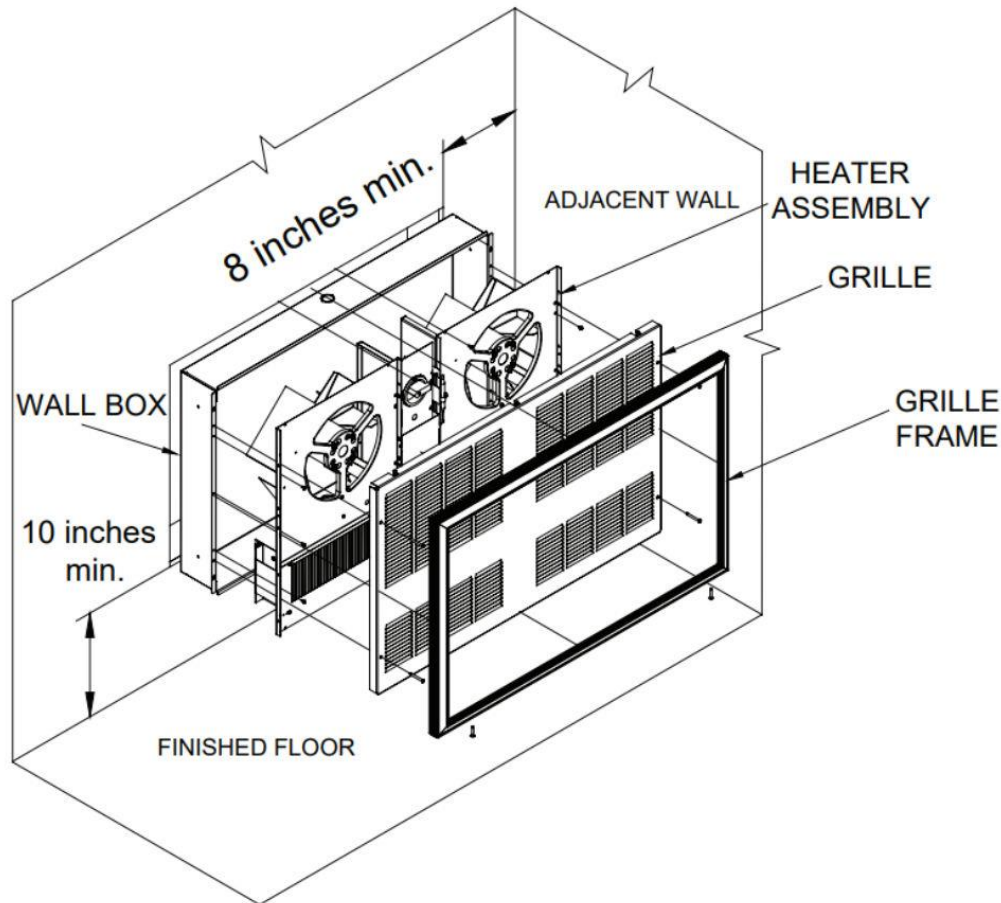
MOUNTING CLEARANCES

The 3340 series requires clearances of 8 inches from adjacent walls and 10 inches from the finished floor. Heater may be installed for top inlet, bottom discharge only.

SURFACE MOUNT APPLICATIONS



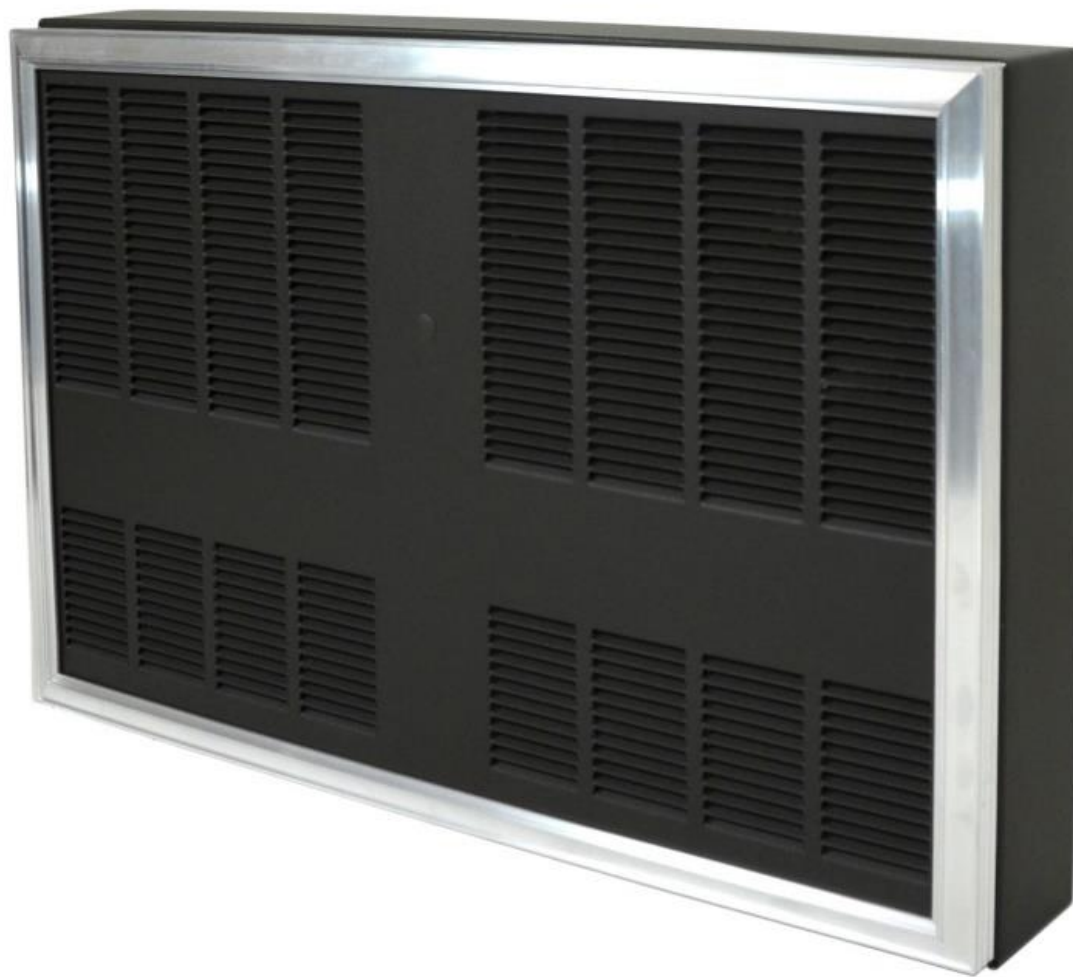
1. Determine location of heater. Note required clearances as stated above.
2. Mount the wall box with appropriate hardware for specific mounting surface. Holes are provided in the wall box. Knockouts are provided on the top and bottom of the wall box. Power may enter from either the top or bottom. If power wiring is entering on bottom, leads must be long enough to reach top of heater plus 6 inches.
3. Place the surface mount frame over the wall box.
4. Place heater assembly into wall box, align heater mounting holes with surface mounting frame and wall box. Re-install all screws.
5. Install power wiring. Refer to **WIRING SECTION** for details. **NOTE: REMEMBER TO TURN POWER SWITCH ON BEFORE INSTALLING GRILLE, MAKE SURE MAIN BREAKER IS OFF.**
6. Install grille and grille frame.
7. For operating instructions see **OPERATION SECTION**.

**RECESSED MOUNTING**

1. Determine location of heater. Note required clearances as stated above.
2. Mount the wall box with appropriate hardware for specific mounting surface. Holes are provided in the wall box. Knockouts are provided on the top and bottom of the wall box. Power may enter from either the top or bottom. Rough in hole dimensions are 30-1/2 inches wide x 19-1/2 inches high.
3. The 3340 series is designed for recessing in a 4 inch wall. For semi-recessed installations (2 inches max.) use surface mounting frame 3340EX16.
4. Mount the wall box. Route power wiring into box. If power wiring is entering on bottom, leads must be long enough to reach top of heater plus 6 inches.
5. Place heater assembly into wall box, align heater mounting holes with surface mounting frame (if required) and wall box. Re-install all screws.
6. Install power wiring. Refer to **WIRING SECTION** for details. **NOTE: REMEMBER TO TURN POWER SWITCH ON BEFORE INSTALLING GRILLE MAKE SURE MAIN BREAKER IS OFF.**
7. Install grille and grille frame.
8. For operating instructions see **OPERATION SECTION**.



HEATER



| ID | Author | Description Error | Description Update | Supervisor Name |
|----|-----------------|-------------------|--------------------|-----------------|
| V1 | Angelica Romero | New Data Sheet | New Data Sheet | Jessica Lorenzo |