

Características Generales de los Luminarios Led, LightCircle.

En VentDepot contamos con una nueva línea de Luces, Led con alta tasa de conversión de luz, larga vida útil. Los Paneles LED son sistemas de iluminación basados en la tecnología LED con placas LGP (Light Guide Panel). Estas placas LGP, tienen la virtud de difundir la luz de manera muy uniforme.

Material: Aluminio.
 Luminario para uso interior.
 30,000h de uso continuo aproximado.
 Tipo de luz: LED.
 Cubierta de PC anti-UV.
 Clips deslizables y ajustables para orificios con diferentes diámetros.
 Driver incluido.
 Ángulo de iluminación 180°.
 Temperatura de color disponible: 6000K (LD) 4000K (NT) 3000K (BC).
 Funciona en un rango de voltaje de 100-277V.
 IRC≥80.
 IP:20.
 Cubierta PC Anti-UV.
 Ganchos deslizables y ajustables.
 Certificado NOM.



Aplicaciones de los Luminarios Led, LightCircle.

El LightCircle es utilizado para las oficinas, hogares, restaurantes, hoteles, comercios, centros comerciales, plazas comerciales, edificios, universidades, etc.

Garantía de los Luminarios Led, LightCircle.

El LightCircle, cuenta con 1 año de garantía sujeto a cláusulas VentDepot.

Características Técnicas Específicas de los Luminarios Led, LightCircle.

| Clave | Piezas | Alimentación | | | Ganchos Ajustables | Color de Luz | Temperatura de Color | Peso y Dimensiones con Empaque en cm. | | | |
|-----------|--------|--------------|------|----|--------------------|---------------|----------------------|---------------------------------------|------|------|-------|
| | | V | Lm | W | | | | Kg | Base | Alto | Ancho |
| MXLTC-001 | 1 | 100-277 | 1700 | 18 | 70 a 100 mm | Blanco Cálido | 3000K | 0.50 | 15 | 4 | 15 |
| MXLTC-002 | 2 | 100-277 | 1700 | 18 | 70 a 100 mm | Blanco Cálido | 3000K | 1.00 | 30 | 8 | 30 |
| MXLTC-003 | 3 | 100-277 | 1700 | 18 | 70 a 100 mm | Blanco Cálido | 3000K | 1.5 | 45 | 12 | 45 |
| MXLTC-004 | 4 | 100-277 | 1700 | 18 | 70 a 100 mm | Blanco Cálido | 3000K | 2.00 | 60 | 16 | 60 |
| MXLTC-005 | 5 | 100-277 | 1700 | 18 | 70 a 100 mm | Blanco Cálido | 3000K | 2.5 | 75 | 20 | 75 |
| MXLTC-006 | 10 | 100-277 | 1700 | 18 | 70 a 100 mm | Blanco Cálido | 3000K | 5.00 | 150 | 24 | 150 |
| MXLTC-007 | 20 | 100-277 | 1700 | 18 | 70 a 100 mm | Blanco Cálido | 3000K | 10.00 | 300 | 28 | 300 |
| MXLTC-008 | 25 | 100-277 | 1700 | 18 | 70 a 100 mm | Blanco Cálido | 3000K | 12.5 | 375 | 32 | 375 |





Características Técnicas Específicas de los Luminarios Led, LightCircle.

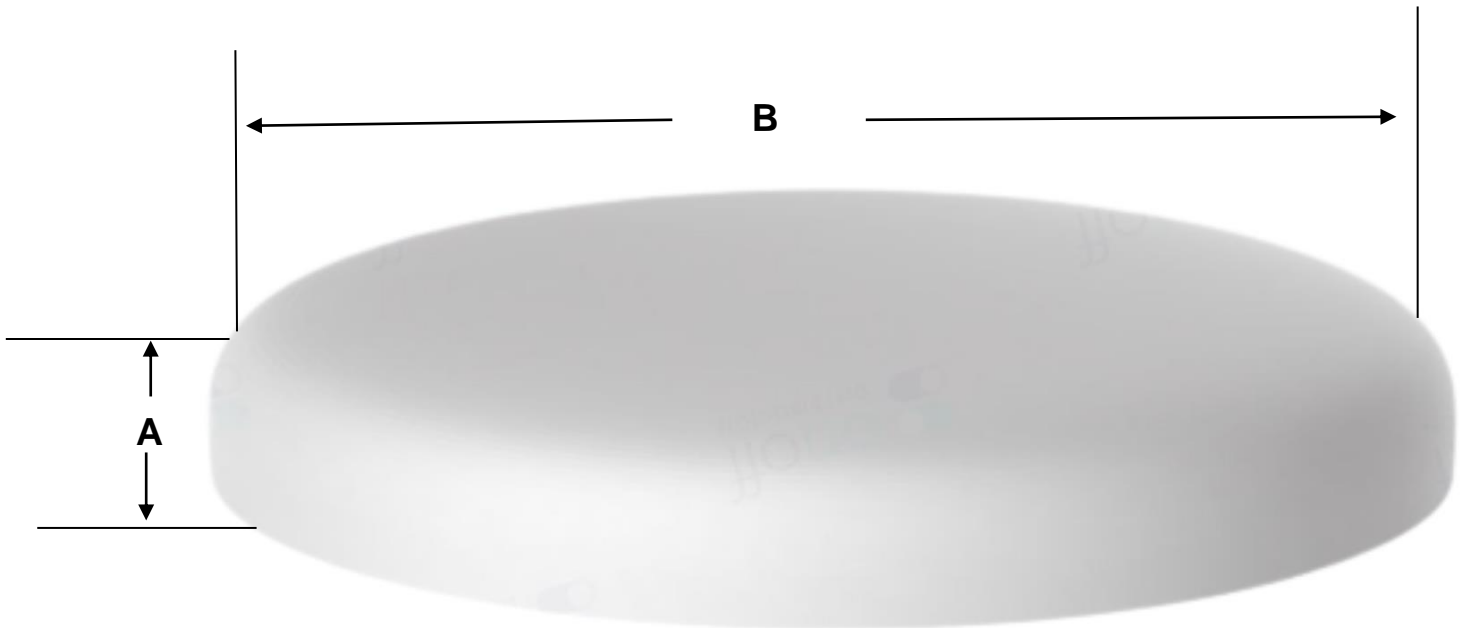
| Clave | Piezas | Alimentación | | | Ganchos Ajustables | Color de Luz | Temperatura de Color | Peso y Dimensiones con Empaque en cm. | | | |
|-----------|--------|--------------|------|----|--------------------|---------------|----------------------|---------------------------------------|------|------|-------|
| | | V | Lm | W | | | | Kg | Base | Alto | Ancho |
| MXLTC-009 | 1 | 100-277 | 1750 | 18 | 70 a 100 mm | Neutro | 4000K | 0.50 | 15 | 4 | 15 |
| MXLTC-010 | 2 | 100-277 | 1750 | 18 | 70 a 100 mm | Neutro | 4000K | 1.00 | 30 | 8 | 30 |
| MXLTC-011 | 3 | 100-277 | 1750 | 18 | 70 a 100 mm | Neutro | 4000K | 1.5 | 45 | 12 | 45 |
| MXLTC-012 | 4 | 100-277 | 1750 | 18 | 70 a 100 mm | Neutro | 4000K | 2.00 | 60 | 16 | 60 |
| MXLTC-013 | 5 | 100-277 | 1750 | 18 | 70 a 100 mm | Neutro | 4000K | 2.5 | 75 | 20 | 75 |
| MXLTC-014 | 10 | 100-277 | 1750 | 18 | 70 a 100 mm | Neutro | 4000K | 5.00 | 150 | 24 | 150 |
| MXLTC-015 | 20 | 100-277 | 1750 | 18 | 70 a 100 mm | Neutro | 4000K | 10.00 | 300 | 28 | 300 |
| MXLTC-016 | 25 | 100-277 | 1750 | 18 | 70 a 100 mm | Neutro | 4000K | 12.5 | 375 | 32 | 375 |
| MXLTC-017 | 1 | 100-277 | 1800 | 18 | 70 a 100 mm | Luz de día | 6000K | 0.50 | 15 | 4 | 15 |
| MXLTC-018 | 2 | 100-277 | 1800 | 18 | 70 a 100 mm | Luz de día | 6000K | 1.00 | 30 | 8 | 30 |
| MXLTC-019 | 3 | 100-277 | 1800 | 18 | 70 a 100 mm | Luz de día | 6000K | 1.5 | 45 | 12 | 45 |
| MXLTC-020 | 4 | 100-277 | 1800 | 18 | 70 a 100 mm | Luz de día | 6000K | 2.00 | 60 | 16 | 60 |
| MXLTC-021 | 5 | 100-277 | 1800 | 18 | 70 a 100 mm | Luz de día | 6000K | 2.5 | 75 | 20 | 75 |
| MXLTC-022 | 10 | 100-277 | 1800 | 18 | 70 a 100 mm | Luz de día | 6000K | 5.00 | 150 | 24 | 150 |
| MXLTC-023 | 20 | 100-277 | 1800 | 18 | 70 a 100 mm | Luz de día | 6000K | 10.00 | 300 | 28 | 300 |
| MXLTC-024 | 25 | 100-277 | 1800 | 18 | 70 a 100 mm | Luz de día | 6000K | 12.5 | 375 | 32 | 375 |
| MXLTC-025 | 1 | 100-277 | 2300 | 24 | 70 a 150 mm | Blanco Cálido | 3000K | 0.80 | 20 | 4 | 20 |
| MXLTC-026 | 2 | 100-277 | 2300 | 24 | 70 a 150 mm | Blanco Cálido | 3000K | 1.6 | 40 | 8 | 40 |
| MXLTC-027 | 3 | 100-277 | 2300 | 24 | 70 a 150 mm | Blanco Cálido | 3000K | 2.4 | 60 | 12 | 60 |
| MXLTC-028 | 4 | 100-277 | 2300 | 24 | 70 a 150 mm | Blanco Cálido | 3000K | 3.2 | 80 | 16 | 80 |
| MXLTC-029 | 5 | 100-277 | 2300 | 24 | 70 a 150 mm | Blanco Cálido | 3000K | 4.00 | 100 | 20 | 100 |
| MXLTC-030 | 10 | 100-277 | 2300 | 24 | 70 a 150 mm | Blanco Cálido | 3000K | 8.00 | 200 | 24 | 200 |
| MXLTC-031 | 20 | 100-277 | 2300 | 24 | 70 a 150 mm | Blanco Cálido | 3000K | 16.00 | 400 | 28 | 400 |
| MXLTC-032 | 25 | 100-277 | 2300 | 24 | 70 a 150 mm | Blanco Cálido | 3000K | 20 | 500 | 32 | 500 |
| MXLTC-033 | 1 | 100-277 | 2350 | 24 | 70 a 150 mm | Neutro | 4000K | 0.80 | 20 | 4 | 20 |
| MXLTC-034 | 2 | 100-277 | 2350 | 24 | 70 a 150 mm | Neutro | 4000K | 1.6 | 40 | 8 | 40 |
| MXLTC-035 | 3 | 100-277 | 2350 | 24 | 70 a 150 mm | Neutro | 4000K | 2.4 | 60 | 12 | 60 |
| MXLTC-036 | 4 | 100-277 | 2350 | 24 | 70 a 150 mm | Neutro | 4000K | 3.2 | 80 | 16 | 80 |
| MXLTC-037 | 5 | 100-277 | 2350 | 24 | 70 a 150 mm | Neutro | 4000K | 4.00 | 100 | 20 | 100 |
| MXLTC-038 | 10 | 100-277 | 2350 | 24 | 70 a 150 mm | Neutro | 4000K | 8.00 | 200 | 24 | 200 |
| MXLTC-039 | 20 | 100-277 | 2350 | 24 | 70 a 150 mm | Neutro | 4000K | 16.00 | 400 | 28 | 400 |
| MXLTC-040 | 25 | 100-277 | 2350 | 24 | 70 a 150 mm | Neutro | 4000K | 20 | 500 | 32 | 500 |
| MXLTC-041 | 1 | 100-277 | 2400 | 24 | 70 a 150 mm | Luz de día | 6000K | 0.80 | 20 | 4 | 20 |
| MXLTC-042 | 2 | 100-277 | 2400 | 24 | 70 a 150 mm | Luz de día | 6000K | 1.6 | 40 | 8 | 40 |
| MXLTC-043 | 3 | 100-277 | 2400 | 24 | 70 a 150 mm | Luz de día | 6000K | 2.4 | 60 | 12 | 60 |
| MXLTC-044 | 4 | 100-277 | 2400 | 24 | 70 a 150 mm | Luz de día | 6000K | 3.2 | 80 | 16 | 80 |
| MXLTC-045 | 5 | 100-277 | 2400 | 24 | 70 a 150 mm | Luz de día | 6000K | 4.00 | 100 | 20 | 100 |
| MXLTC-045 | 10 | 100-277 | 2400 | 24 | 70 a 150 mm | Luz de día | 6000K | 8.00 | 200 | 24 | 200 |
| MXLTC-047 | 20 | 100-277 | 2400 | 24 | 70 a 150 mm | Luz de día | 6000K | 16.00 | 400 | 28 | 400 |
| MXLTC-048 | 25 | 100-277 | 2400 | 24 | 70 a 150 mm | Luz de día | 6000K | 20 | 500 | 32 | 500 |
| MXLTC-049 | 1 | 100-277 | 3550 | 36 | 70 a 205 mm | Neutro | 4000K | 1 | 25 | 4 | 25 |
| MXLTC-050 | 2 | 100-277 | 3550 | 36 | 70 a 205 mm | Neutro | 4000K | 2 | 50 | 8 | 50 |
| MXLTC-051 | 3 | 100-277 | 3550 | 36 | 70 a 205 mm | Neutro | 4000K | 3 | 75 | 12 | 75 |
| MXLTC-052 | 4 | 100-277 | 3550 | 36 | 70 a 205 mm | Neutro | 4000K | 4 | 100 | 16 | 100 |
| MXLTC-053 | 5 | 100-277 | 3550 | 36 | 70 a 205 mm | Neutro | 4000K | 5 | 125 | 20 | 125 |
| MXLTC-054 | 10 | 100-277 | 3550 | 36 | 70 a 205 mm | Neutro | 4000K | 10 | 250 | 24 | 250 |
| MXLTC-055 | 20 | 100-277 | 3550 | 36 | 70 a 205 mm | Neutro | 4000K | 20 | 500 | 28 | 500 |
| MXLTC-056 | 25 | 100-277 | 3550 | 36 | 70 a 205 mm | Neutro | 4000K | 25 | 625 | 32 | 625 |
| MXLTC-057 | 1 | 100-277 | 3600 | 36 | 70 a 205 mm | Luz de día | 6000K | 1 | 25 | 4 | 25 |
| MXLTC-058 | 2 | 100-277 | 3600 | 36 | 70 a 205 mm | Luz de día | 6000K | 2 | 50 | 8 | 50 |
| MXLTC-059 | 3 | 100-277 | 3600 | 36 | 70 a 205 mm | Luz de día | 6000K | 3 | 75 | 12 | 75 |
| MXLTC-060 | 4 | 100-277 | 3600 | 36 | 70 a 205 mm | Luz de día | 6000K | 4 | 100 | 16 | 100 |
| MXLTC-061 | 5 | 100-277 | 3600 | 36 | 70 a 205 mm | Luz de día | 6000K | 5 | 125 | 20 | 125 |
| MXLTC-062 | 10 | 100-277 | 3600 | 36 | 70 a 205 mm | Luz de día | 6000K | 10 | 250 | 24 | 250 |
| MXLTC-063 | 20 | 100-277 | 3600 | 36 | 70 a 205 mm | Luz de día | 6000K | 20 | 500 | 28 | 500 |
| MXLTC-064 | 25 | 100-277 | 3600 | 36 | 70 a 205 mm | Luz de día | 6000K | 25 | 625 | 32 | 625 |





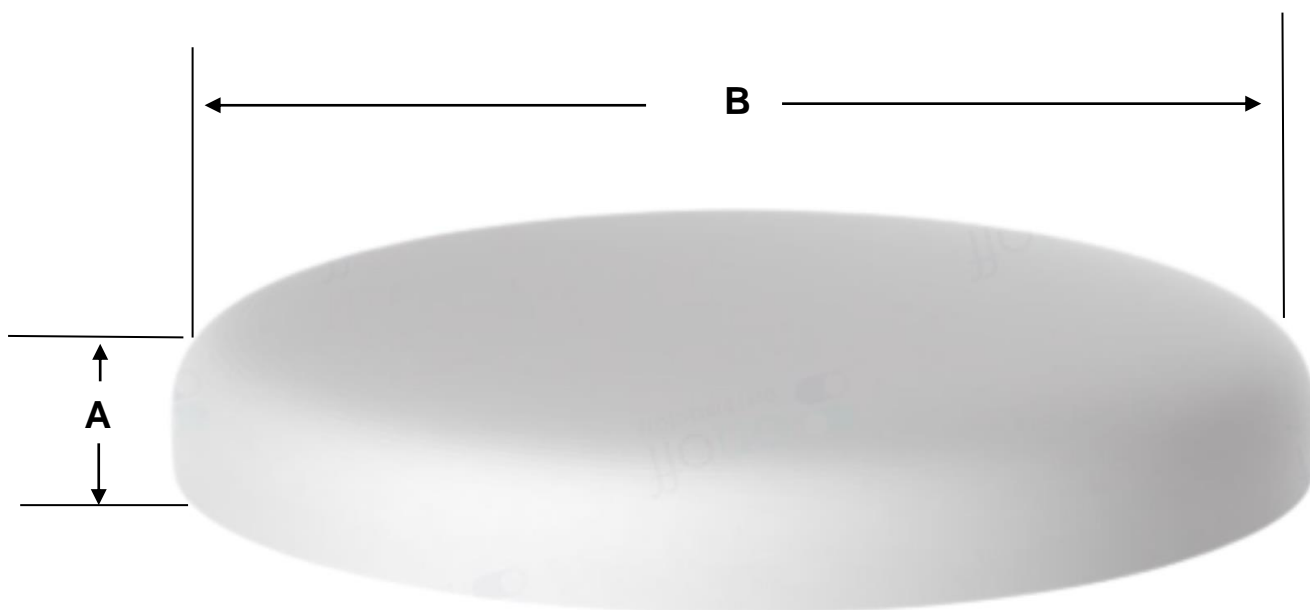
Dimensiones Específicas de los Luminarios Led, LightCircle en mm.

| Clave | A | B |
|---------------|----|-----|
| MXLTC-001/008 | 19 | 120 |
| MXLTC-009/016 | 19 | 120 |
| MXLTC-017/024 | 19 | 120 |



Dimensiones Específicas de los Luminarios Led, LightCircle en mm.

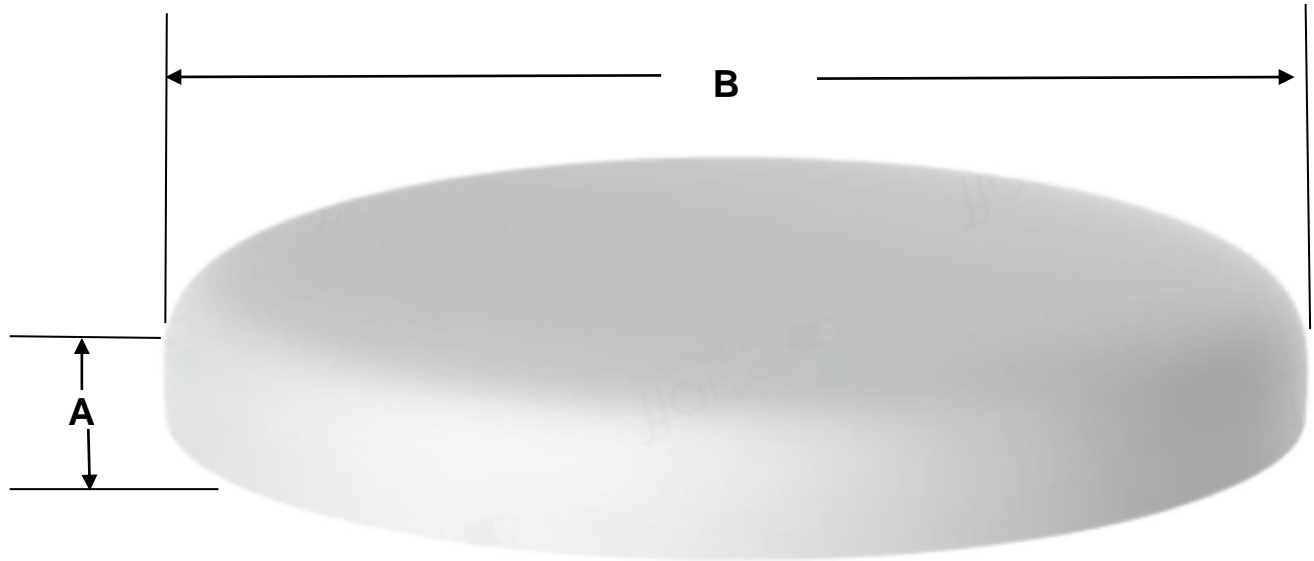
| Clave | A | B |
|---------------|----|-----|
| MXLTC-025/032 | 19 | 175 |
| MXLTC-033/040 | 19 | 175 |
| MXLTC-041/048 | 19 | 175 |





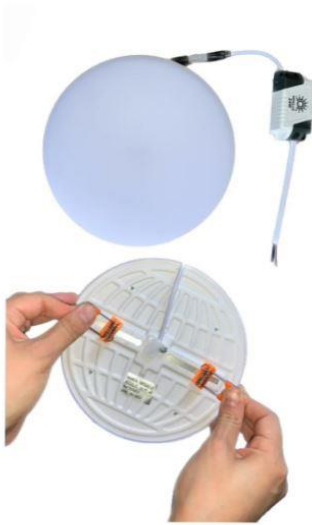
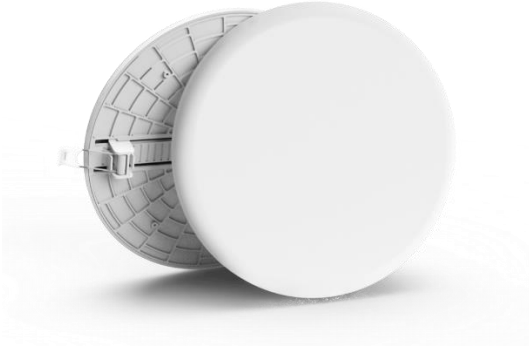
Dimensiones Específicas de los Luminarios Led, LightCircle en mm.

| Clave | A | B |
|---------------|----|-----|
| MXLTC-049/056 | 19 | 225 |
| MXLTC-057/064 | 19 | 225 |





Galería de los Luminarios Led, LightCircle.



| Versión de Corrección | Nombre del Autor | Descripción del Error | Descripción de la Corrección | Vo.Bo. Supervisor |
|-----------------------|------------------|-----------------------|------------------------------|-------------------|
| V1 | Patricia Pedraza | Ficha Nueva | Ninguna | Jessica Lorenzo |

